

LOC/DME I-SMX	APP CRS	Rwy Idg
<b>108.9</b>	<b>120°</b>	<b>8004</b>
Chan <b>26</b>		TDZE <b>230</b>
		Apt Elev <b>261</b>

# ILS or LOC RWY 12

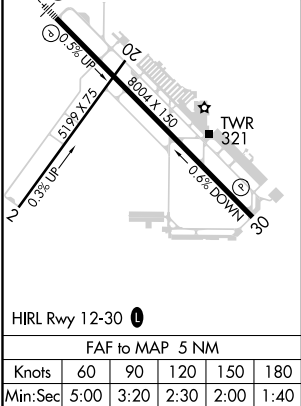
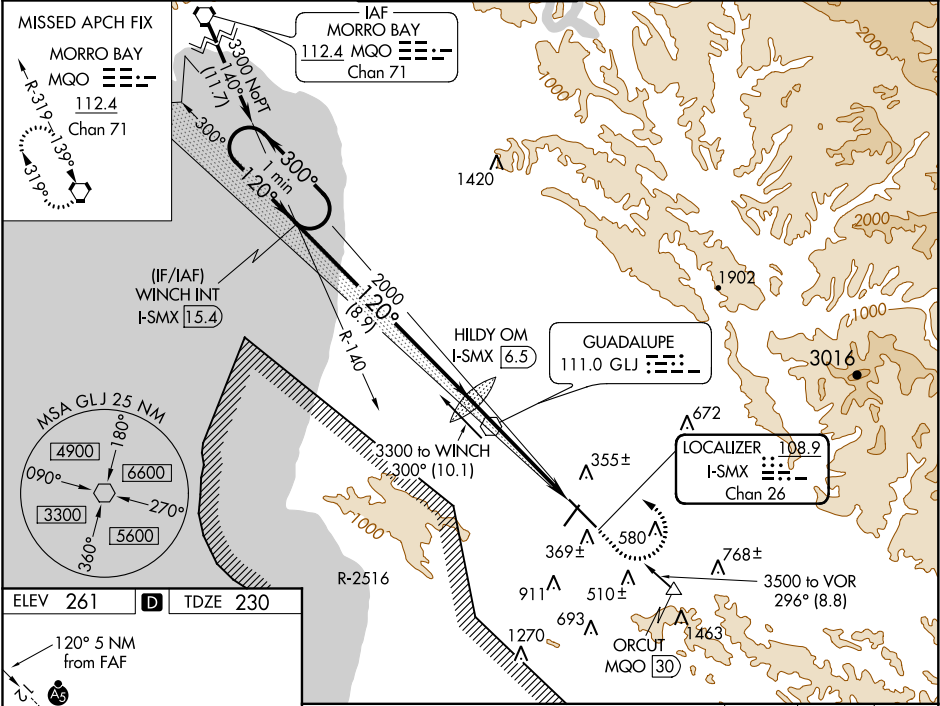
SANTA MARIA PUBLIC/CAPTAIN G ALLAN HANCOCK FIELD (SMX)

**⚠** Night Landing: Rwy 2 NA. VDP NA with Vandenberg alimeter setting. When local altimeter setting not received, use Vandenberg altimeter setting and increase all DA 43 feet, and all MDA 60 feet, increase S-LOC 12 Cat C/D visibility to 1¾. For inop MALSR, increase S-LOC 12 Cat C/D visibility to 1¾ mile.  
# RVR 1800 authorized with the use of FD or AP or HUD to DA.



**MISSED APPROACH:** Climb to 800, then climbing left turn to 5000 direct MQO VORTAC and hold.

ATIS <b>121.15</b>	SANTA BARBARA APP CON* <b>124.15 327.8</b>	SANTA MARIA TOWER* <b>118.3 (CTAF) 239.25</b>	GND CON <b>121.9</b>	UNICOM <b>122.95</b>
-----------------------	---	--	-------------------------	-------------------------



WINCH I-SMX 15.4				
One Minute Holding Pattern				
HILDY OM I-SMX 6.5				
3300 300° 120° 120° 2000 1886 2.7 1.5				
GS 3.00° TCH 55 8.9 NM 3.8 NM 1.2 NM				
CATEGORY	A	B	C	D
S-ILS 12#	430/24 200 (200-½)			
S-LOC 12	680/24 450 (500-½)		680/50 450 (500-1)	
CIRCLING	860-1 599 (600-1)		860-1½ 1320-3 599 (600-1½) 1059 (1100-3)	