

APP CRS	Rwy ldg	8004
316°	TDZE	261
	Apt Elev	261

RNAV (GPS) RWY 30

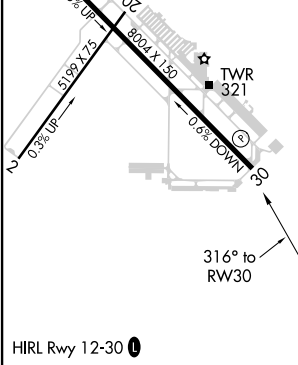
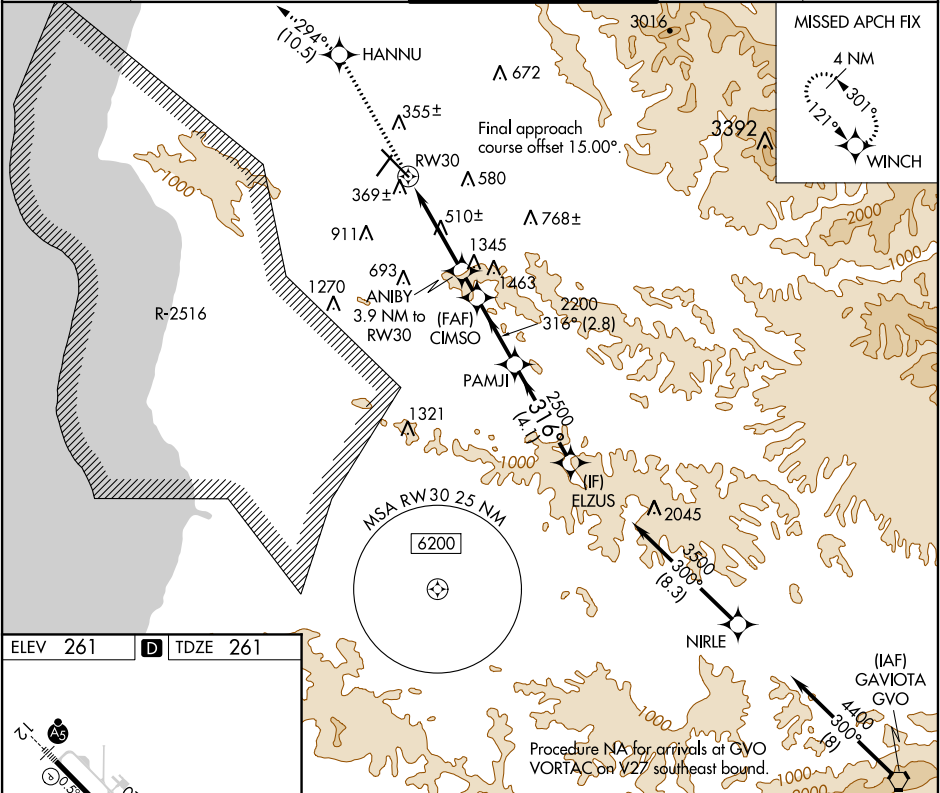
SANTA MARIA PUBLIC/CAPTAIN G ALLAN HANCOCK FIELD (SMX)

⚠

DME/DME RNP-0.3 NA. When local alimeter setting not received, use San Luis County Rgnl alimeter setting and increase all MDA 60 feet. Rwy 30 helicopter visibility reduction below 1 SM NA. Straight-in Rwy 30 NA at night, Circling Rwy 2, 30 NA at night.

MISSED APPROACH: Climb to 4000 direct HANNU and on track 294° to WINCH and hold.

ATIS	SANTA BARBARA APP CON *	SANTA MARIA TOWER *	GND CON	UNICOM
121.15	124.15 327.8	118.3 (CTAF) 239.25	121.9	122.95



4000	HANNU	WINCH	Visual Segment - Obstacles.			
↑	tr 294°					
	ANIBY 3.9 NM to RW30	CIMS0	PAMJI	ELZUS		
	1780	2200	2500	3500		
	3.9 NM	1.1 NM	2.8 NM	4.1 NM		
CATEGORY	A	B	C	D		
LNAV MDA	1600-1¼ 1339 (1400-1¼)	1600-1½ 1339 (1400-1½)	1600-3 1339 (1400-3)	NA		
CIRCLING	1600-1¼ 1339 (1400-1¼)	1600-1½ 1339 (1400-1½)	1600-3 1339 (1400-3)	NA		

SW-3, 31 DEC 2020 to 28 JAN 2021

SW-3, 31 DEC 2020 to 28 JAN 2021