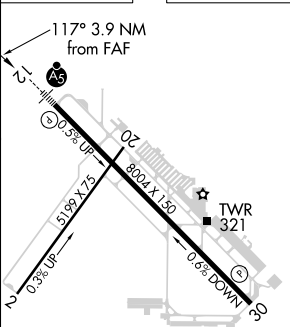



VOR RWY 12
SANTA MARIA PUBLIC/CAPTAIN G ALLAN HANCOCK FIELD (SMX)

MISSED APPROACH: Climb to 1000 then climbing left turn to 5000 direct MQO VORTAC and hold.

ELEV 261	D	TDZE 230
----------	----------	----------



CATEGORY	A	B	C	D	HIRL Rwy 12-30 					
S-12	740/24	510 (500-½)	740/55	510 (500-1)	FAF to MAP 3.9 NM					
CIRCLING	860-1	599 (600-1)	860-1½	1320-3	Knots	60	90	120	150	180
			599 (600-½)	1059 (1100-3)	Min:Sec	3:54	2:36	1:57	1:34	1:18

SW-3, 31 DEC 2020 to 28 JAN 2021