

EL CENTRO, CALIFORNIA

VOR/DME RWY 30

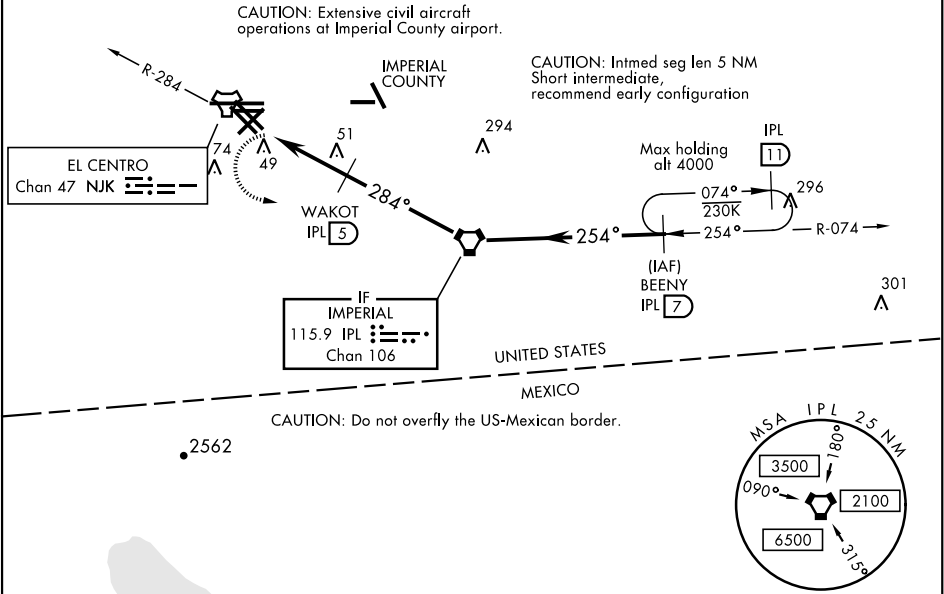
VORTAC IPL 115.9 Chan 106	APCH CRS 284°	Rwy Idg TDZE Arpt Elev 6825 -42 -42
---	-------------------------	---

AL-472 [USN]

EL CENTRO NAF (VRACIU FLD) (KNJK)

▼ Visibility reduction by helicopters NA.		MISSED APPROACH: Climb to 600, then climbing left turn to 2000, intercept IPL VORTAC R-074 to BEENY and hold.		
ATIS ★ 269.275	LOS ANGELES CENTER 128.6 291.7	EL CENTRO TOWER ★ 119.1 360.2	GND CON 121.9 254.35	CLNC DEL 340.2

RWY 30: 20:1 visual area penetrated by
Fence, lit, 289 ft from thld, 213 ft right of course, 8 AGL/-34 MSL
Fence, 199 ft from thld, 305 ft right of course, 8 AGL/-34 MSL,
Fence, 504 ft from thld, 3 ft right of course, 8 AGL/-34 MSL,



EMERG SAFE ALT 100 NM 17,100 from NJK TACAN

600 ↑	2000 ↖	IPL R-074	BEENY IPL 7	
<div><div><div>ZALIG IPL 8</div><div>WAKOT IPL 5</div><div>BEENY IPL 7</div></div><div><div>284°</div><div>254°</div><div>2.94°</div></div><div><div>1100</div><div>1500</div><div>2000</div></div><div><div>VORTAC</div><div>WAKOT</div><div>BEENY</div></div><div><div>0.5</div><div>3 NM</div></div><div><div>TCH 50</div></div></div>				
CATEGORY	A	B	C	D
S-30	340-1	382 (400-1)	340-1½	382 (400-1½)
CIRCLING	420-1	462 (500-1)	420-1½ 462 (500-1½)	520-2 562 (600-2)

ELEV -42	TDZE -42
HIRL Rwy's 8-26, 12-30	
FAF to MAP 3.0 NM	
Knots	60 90 120 150 180
Min:Sec	3:00 2:00 1:30 1:12 1:00

EL CENTRO, CALIFORNIA

32°50'N-115°40'W

EL CENTRO NAF (VRACIU FLD) (KNJK)

Amdr 4 18JUN20

VOR/DME RWY 30

SW-3, 31 DEC 2020 to 28 JAN 2021

SW-3, 31 DEC 2020 to 28 JAN 2021