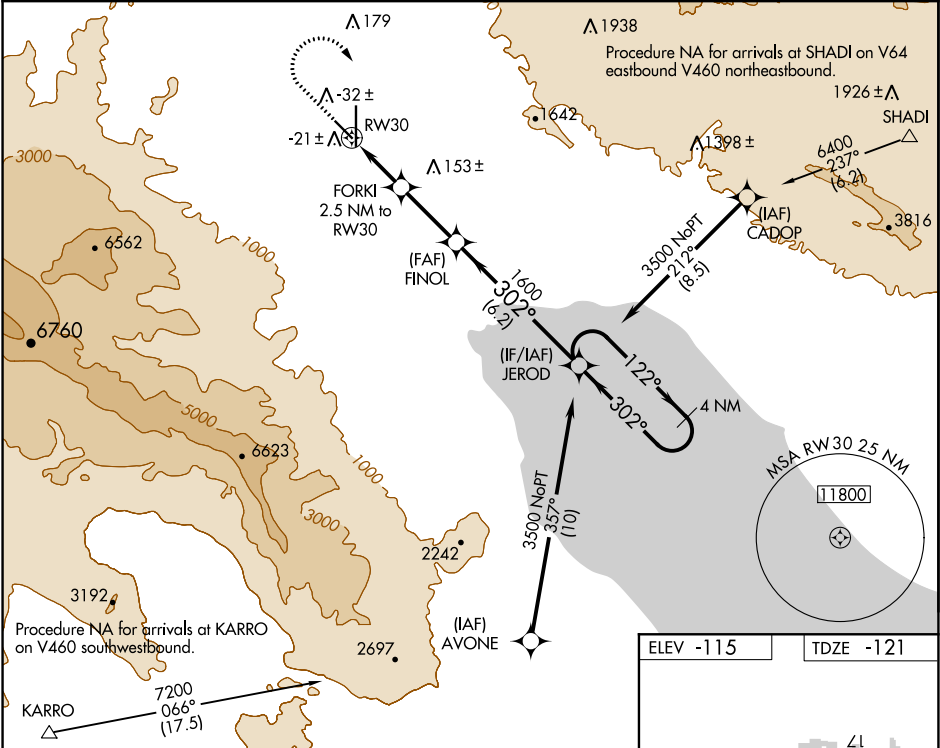



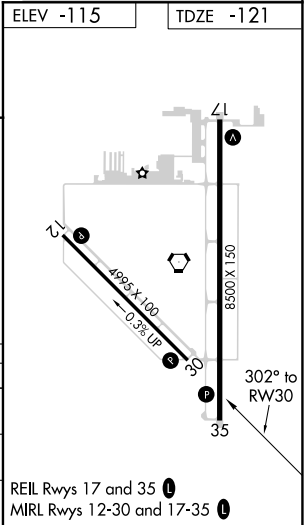
WAAS CH 77941 W30A	APP CRS 302°	Rwy Idg TDZE Apt Elev	4995 -121 -115
--	------------------------	-----------------------------	---

RNAV (GPS) RWY 30
JACQUELINE COCHRAN RGNL (TRM)

RNP APCH. ▼ ▲ Rwy 30 helicopter visibility reduction below ¾ SM NA.		MISSED APPROACH: (Do not exceed 230K until JEROD) Climb to 1200 then climbing right turn to 3500 direct JEROD and hold.	
ASOS 118.325	SOCAL APP CON 135.275 251.1	CLNC DEL 120.225	UNICOM 123.0 (CTAF) 0



1200 ↑		3500 ↗		JEROD 		VGSI and RNAV glidepath not coincident (VGSI Angle 3.00/TCH 25).			
* LNAV only		FORKI 2.5 NM to RW30		FINOL 1600		JEROD		4 NM Holding Pattern	
* 1.1 NM to RW30		RW30		↗ 302° ↖ 1600		↗ 122° ↖ 302°		3500	
1.1		1.4 NM		2.8 NM		6.2 NM		GP 3.00° TCH 45	
CATEGORY		A		B		C		D	
LPV DA		129-¾ 250 (300-¾)							
LNAV MDA		260-1 381 (400-1)				260-1½ 381 (400-1½)			
CIRCLING		320-1 435 (500-1)		340-1 455 (500-1)		460-1½ 575 (600-1½)		780-3 895 (900-3)	



SW-3, 31 DEC 2020 to 28 JAN 2021

SW-3, 31 DEC 2020 to 28 JAN 2021