

VORTAC TRM <b>116.2</b> Chan <b>109</b>	APP CRS <b>316°</b>	Rwy Idg <b>4995</b> TDZE <b>-121</b> Apt Elev <b>-115</b>
---	------------------------	---

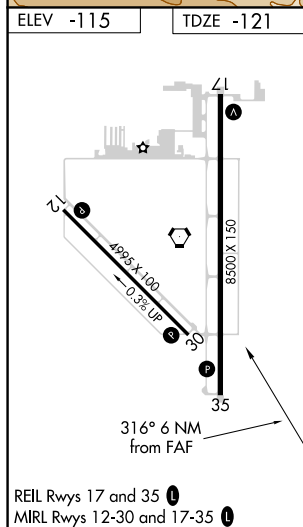
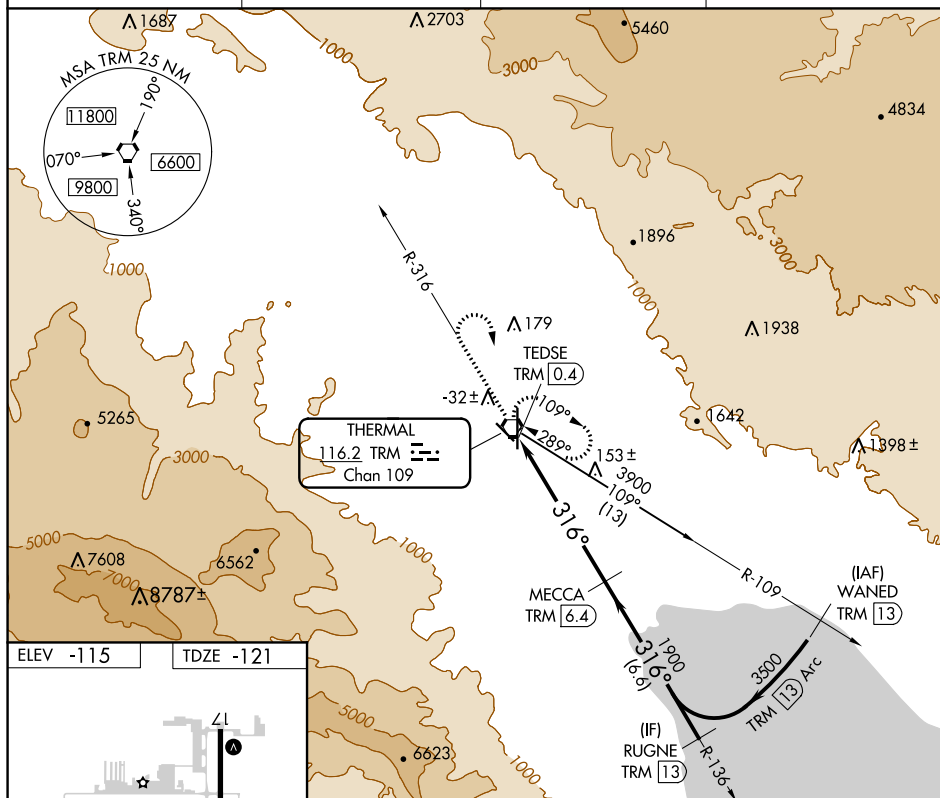
VOR RWY 30  
JACQUELINE COCHRAN RGNL (TRM)

DME required.

**T**  
**A** Rwy 30 helicopter visibility reduction below  $\frac{3}{4}$  SM NA.

**MISSED APPROACH:** Climb to 1300 on TRM VORTAC R-316 then climbing right turn to 5400 direct TRM VORTAC and hold, continue climb-in-hold to 5400.

ASOS <b>118.325</b>	SOCAL APP CON <b>135.275 251,1</b>	CLNC DEL <b>120.225</b>	UNICOM <b>123.0 (CTAF) 0</b>
------------------------	---------------------------------------	----------------------------	---------------------------------



CATEGORY	A	B	C	D
S-30	300-1 421 (500-1)		300-1¼	421 (500-1¼)
<b>C</b> CIRCLING	320-1 435 (500-1)	340-1 455 (500-1)	460-1½ 575 (600-1½)	780-3 895 (900-3)