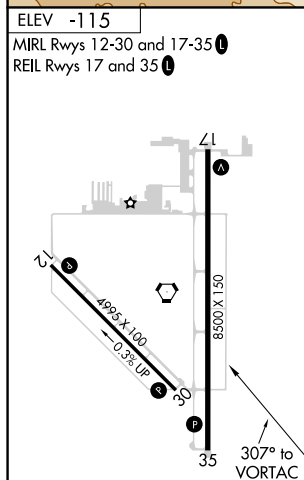
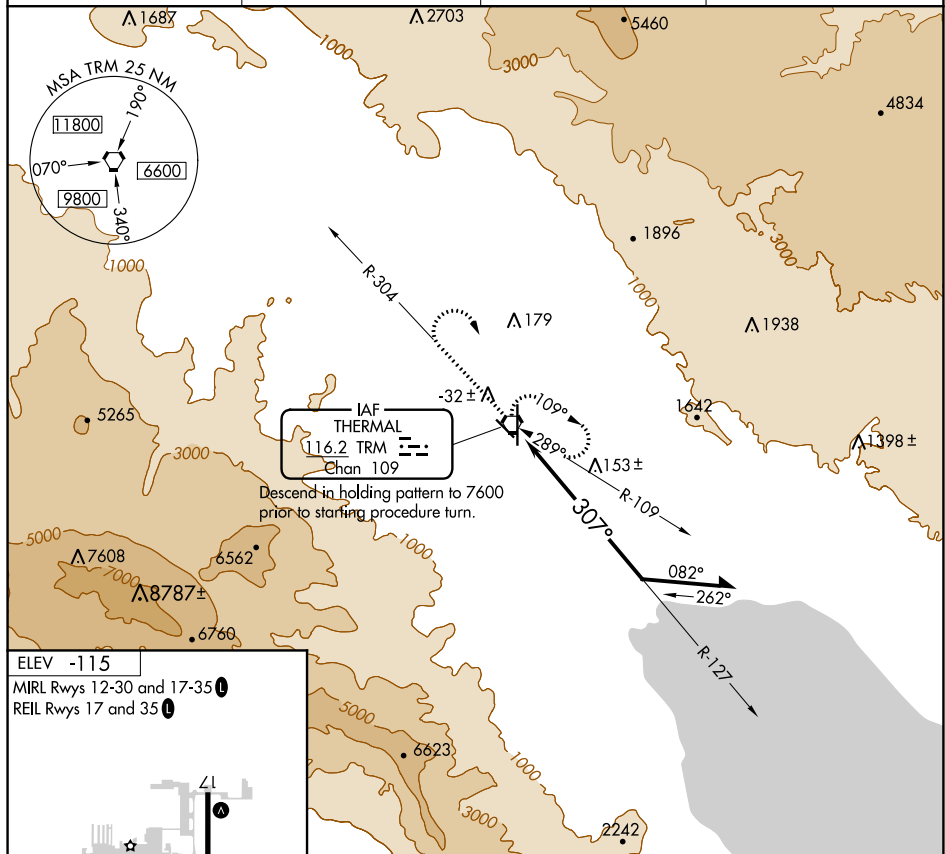


VORTAC TRM <b>116.2</b> Chan <b>109</b>	APP CRS <b>307°</b>	Rwy Idg TDZE Apt Elev	<b>N/A</b> <b>N/A</b> <b>-115</b>
---	------------------------	-----------------------------	---

VOR-A  
JACQUELINE COCHRAN RGNL (TRM)

<p><b>V</b></p> <p><b>A</b></p>	<p>MISSED APPROACH: Climb to 2000 on TRM VORTAC R-304 then climbing right turn to 5400 direct TRM VORTAC and hold, continue climb-in-hold to 5400.</p>
---------------------------------	--

ASOS <b>118.325</b>	SOCAL APP CON <b>135.275 251.1</b>	CLNC DEL <b>120.225</b>	UNICOM <b>123.0</b> (CTAF) <b>0</b>
------------------------	---------------------------------------	----------------------------	--



<div><div>2000 ↑ TRM R-304</div><div>5400 ↷</div><div>TRM ⬡</div></div>		<div><div>TRM VORTAC</div><div><div>127°</div><div>2900</div></div><div><div>307°</div></div><div>Remain within 10 NM</div></div>		
CATEGORY	A	B	C	D
<div><div>C</div><div>CIRCLING</div></div>	<div><div>1400-1¼</div><div>1515 (1600-1¼)</div></div>	<div><div>1400-1½</div><div>1515 (1600-1½)</div></div>	<div><div>1400-3</div><div>1515 (1600-3)</div></div>	