

APP CRS	Rwy Idg	5005
270°	TDZE	956
	Apt Elev	983

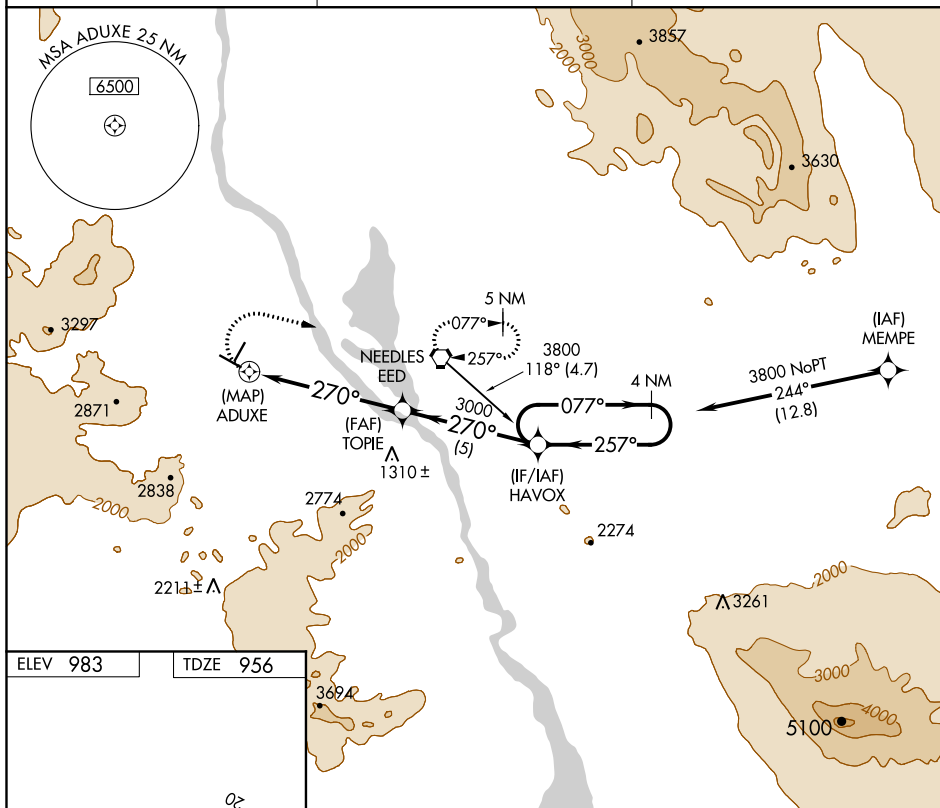
RNAV (GPS) RWY 29
NEEDLES (EED)

T Straight-in minimums not authorized at night.
A NA GPS or RNP-0.3 required. DME/DME RNP-0.3 NA.

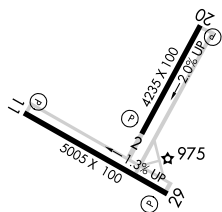
MISSED APPROACH: Climbing right turn to 6000 direct to EED VORTAC and hold.

ASOS
128.325

LOS ANGELES CENTER
134.65 360.65

UNICOM
123.0 (CTAF) **L**

ELEV 983

 TDZE | 9.56 |

MIRL Rwy 2-20 and 11-29 **L**
REIL Rwy 11 and 29 **L**

NEEDLES, CALIFORNIA

Orig 23JAN03

NEEDLES (EED)

34°46'N-114°37'W

RNAV (GPS) RWY 29

SW-3, 31 DEC 2020 to 28 JAN 2021