

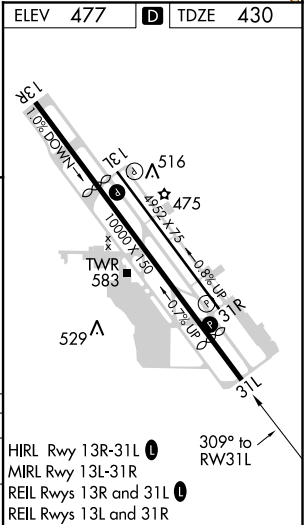
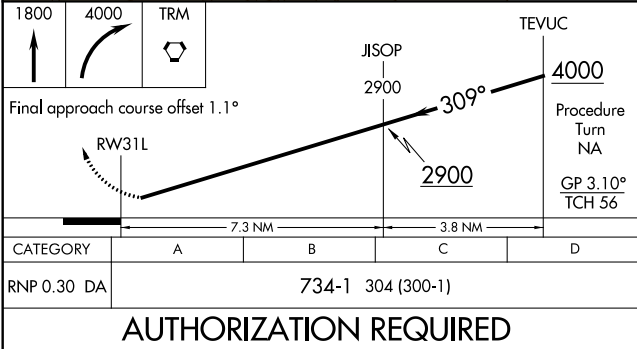
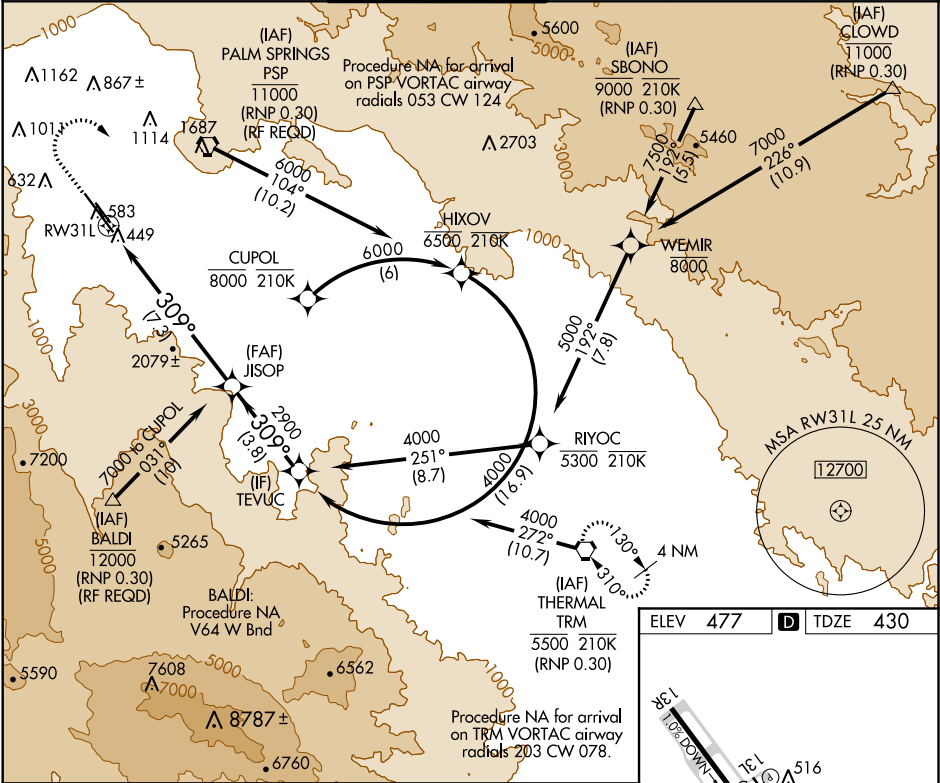
APP CRS	Rwy Idg	8500
309°	TDZE	430
	Apt Elev	477

RNAV (RNP) Y RWY 31L

PALM SPRINGS INTL (PSP)

RNP AR APCH.		MISSED APPROACH: Climb to 1800, then climbing right turn to 4000 direct TRM VORTAC and hold.
Missed approach requires minimum climb of 340' per NM to 3000. For uncompensated Baro-VNAV systems, procedure NA below 2°C or above 54°C.		

ATIS	SOCAL APP CON★	PALM SPRINGS TOWER★	GND CON	CLNC DEL	UNICOM
124.65	126.7 370.95 135.275 251.1	119.7 (CTAF) 377.05	121.9	128.35	122.95



SW-3, 31 DEC 2020 to 28 JAN 2021

SW-3, 31 DEC 2020 to 28 JAN 2021