

APP CRS	Rwy Idg	<b>6857</b>
<b>130°</b>	TDZE	<b>451</b>
	Apt Elev	<b>476</b>

# RNAV (RNP) Z RWY 13R

PALM SPRINGS INTL (PSP)

RNP AR APCH, RF required.

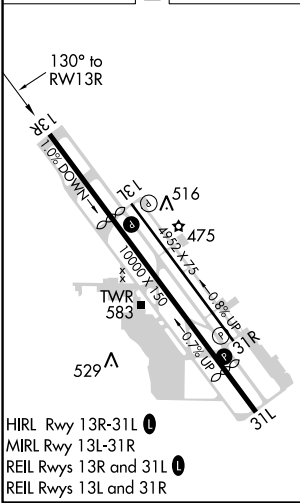
For uncompensated Baro-VNAV systems, procedure NA below 1°C or above 54°C.

MISSED APPROACH: Climb to 900 then climbing left turn to 4000 direct TRM VORTAC and hold.

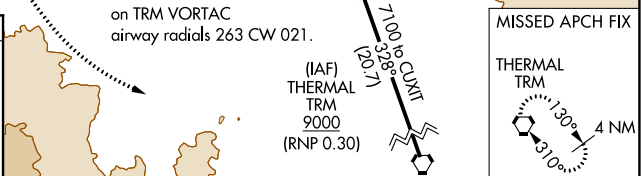
ATIS	SOCAL APP CON *	PALM SPRINGS TOWER *	GND CON	CLNC DEL	UNICOM
<b>124.65</b>	<b>126.7 370.95</b> <b>135.275 251.1</b>	<b>119.7 (CTAF) 377.05</b>	<b>121.9</b>	<b>128.35</b>	<b>122.95</b>



ELEV 476	<b>D</b>	TDZE 451
----------	----------	----------



HIRL Rwy 13R-31L  
MIRL Rwy 13L-31R  
REIL Rwy 13R and 31L  
REIL Rwy 13L and 31R



WASAK	6000	LACIV	4400	FIVUT	3800	JEXOT	2900	NUDCI	1713	RWY 13R
GP 3.00°	TCH 45									
		5 NM	1.9 NM	2.9 NM	3.7 NM	3.8 NM				
CATEGORY	A	B	C	D						
RNP 0.17 DA		812-1¼	361 (400-1¼)							
RNP 0.30 DA		882-1½	431 (500-1½)							

**AUTHORIZATION REQUIRED**

SW-3, 31 DEC 2020 to 28 JAN 2021

SW-3, 31 DEC 2020 to 28 JAN 2021