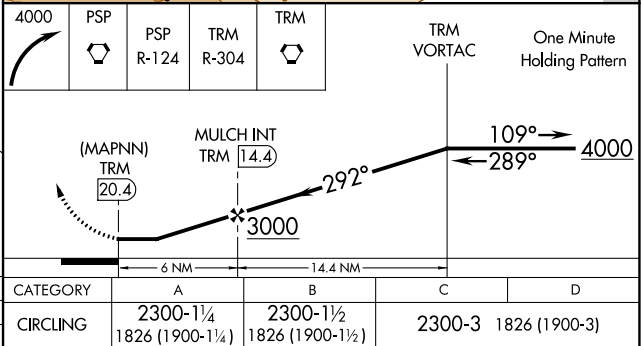


VOR or GPS-B
PALM SPRINGS INTL (PSP)

MISSED APPROACH: Climbing right turn to 4000 direct PSP VORTAC then via PSP R-124 and TRM R-304 to TRM VORTAC and hold.

The map displays the Palm Springs area with various flight paths and navigation aids. Key features include:

- Flight Paths:**
 - R-124:** A straight path from the top right towards the center.
 - R-152:** A path branching from R-124 towards the center.
 - R-304:** A path branching from R-124 towards the bottom right.
 - R-109:** A path branching from R-304 towards the bottom right.
 - MAPNN:** A curved path indicated by a dashed arrow pointing towards the center.
- Navigation Aids:**
 - MULCH INT TRM:** A triangular marker with a value of 14.4.
 - MSA TRM:** A circular marker with a value of 25 NM.
 - IAF:** A triangular marker with a value of 116.2 TRM.
- Terrain and Elevation:**
 - ELEV 474:** A rectangular marker with a value of 474.
 - 10834:** A large number indicating a significant elevation point.
 - 5600, 5000, 3000, 1000:** Contour lines indicating elevation levels.
- Other Markers:**
 - 115.5 PSP:** A rectangular marker with a value of 115.5.
 - Chan 102:** A rectangular marker with a value of 102.
 - Chan 109:** A rectangular marker with a value of 109.



SW-3, 31 DEC 2020 to 28 JAN 2021