

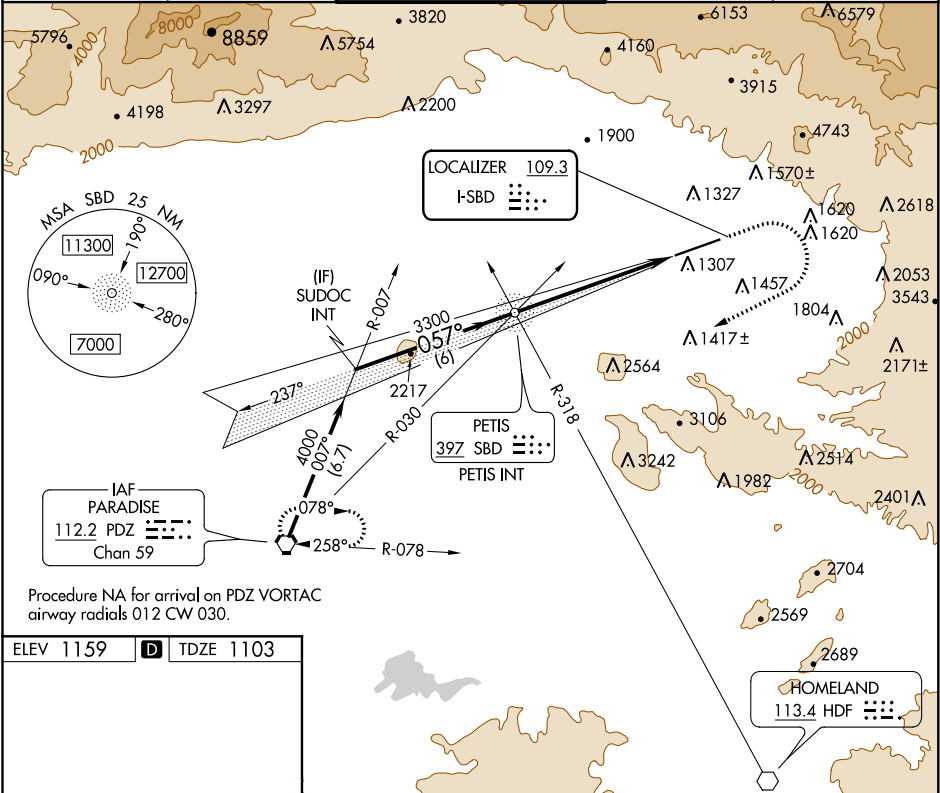
LOC I-SBD <b>109.3</b>	APP CRS <b>057°</b>	Rwy ldg TDZE <b>1103</b> Apt Elev <b>1159</b>
---------------------------	------------------------	---

**LOC Y RWY 6**  
SAN BERNARDINO INTL (SBD)

**⚠** Circling NA northwest of Rwy 6-24. When local altimeter not received, use Ontario altimeter setting and increase all MDA 80 feet; increase S-LOC Cat B and Circling Cat B visibility ¼ SM.

**MISSED APPROACH:** Climb to 2700 then climbing right turn to 6000 direct PDZ VORTAC and hold, continue climb-in-hold to 6000.

ATIS <b>124.175</b>	SOCAL APP CON <b>127.0 318.2</b>	SAN BERNARDINO TOWER ★ <b>119.45</b> (CTAF) <b>0</b>	GND CON <b>121.8</b>	UNICOM <b>122.975</b>
------------------------	-------------------------------------	---	-------------------------	--------------------------



ELEV 1159	<b>D</b>	TDZE 1103
FAF to MAP 6.1 NM		
Knots	60	90 120 150 180
Min:Sec	6:06	4:04 3:03 2:26 2:02

SUDOC INT	VGSI and descent angles not coincident (VGSI Angle 3.00/TCH 52).			2700	6000	PDZ
4000	057°			3300	3.33°	TCH 52
6 NM 6.1 NM						
CATEGORY	A		B		C D	
S-6	2020-1¼ 917 (900-1¼)		2060-3 957 (1000-3)			
<b>C</b> CIRCLING	2020-1¼ 861 (900-1¼)		2060-3 901 (1000-3)		2640-3 1481 (1500-3)	