

APP CRS	Rwy Idg	10000
057°	TDZE	1103
	Apt Elev	1159

RNAV (GPS) Y RWY 6
SAN BERNARDINO INTL (SBD)

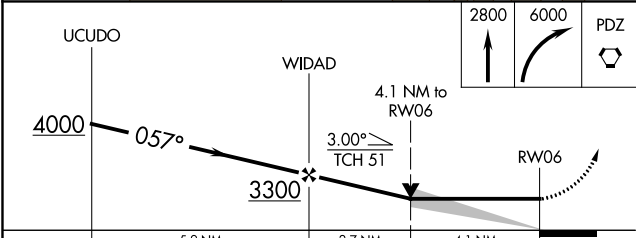
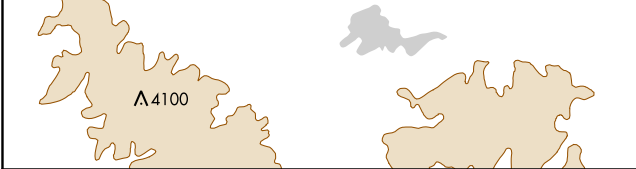
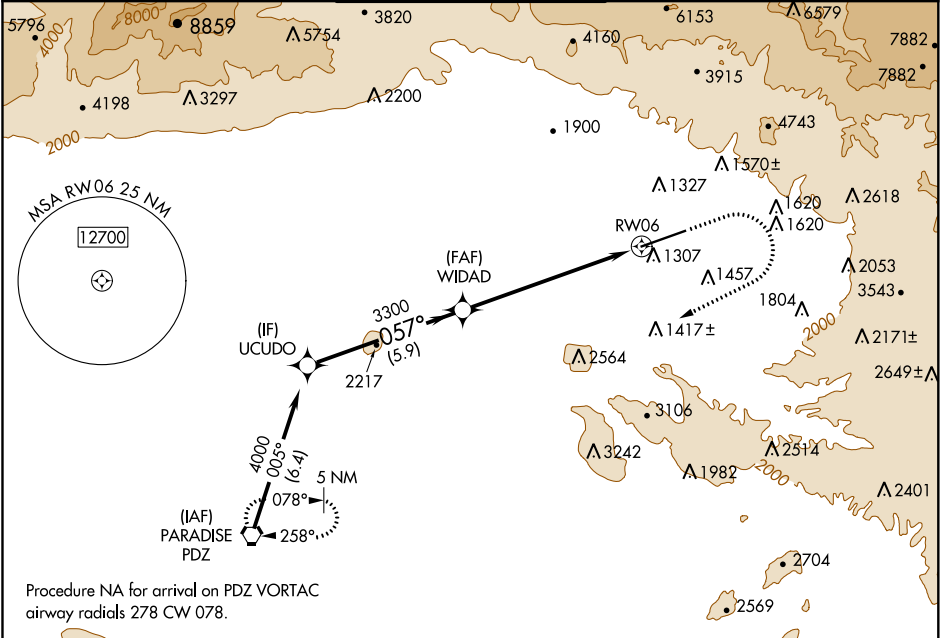
RNP APCH

V Circling NA northwest of Rwy 6-24. When local altimeter setting not received, use Ontario altimeter setting and increase all MDA 80 feet.

A

MISSED APPROACH: Climb to 2800 then climbing right turn to 6000 direct PDZ VORTAC and hold, continue climb-in-hold to 6000.

ATIS 124.175	SOCAL APP CON 127.0 318.2	SAN BERNARDINO TOWER ★ 119.45 (CTAF) 0	GND CON 121.8	UNICOM 122.975
-----------------	------------------------------	---	------------------	-------------------



CATEGORY	A	B	C	D
LNAV MDA	2460-1¼ 1357 (1400-1¼)	2460-1½ 1357 (1400-1½)	2460-3 1357 (1400-3)	
CIRCLING	2460-1¼ 1301 (1400-1¼)	2460-1½ 1301 (1400-1½)	2460-3 1301 (1400-3)	2640-3 1481 (1500-3)

ELEV 1159 **D** TDZE 1103

TWR 0.7% UP 0.8% DOWN 10000 X 200

057° to RW06

HIRL Rwy 6-24 0
REIL Rws 6 and 24 0