

WAAS CH <b>66041</b> <b>W06A</b>	APP CRS <b>057°</b>	Rwy Idg <b>10000</b> TDZE <b>1103</b> Apt Elev <b>1159</b>
--	------------------------	--

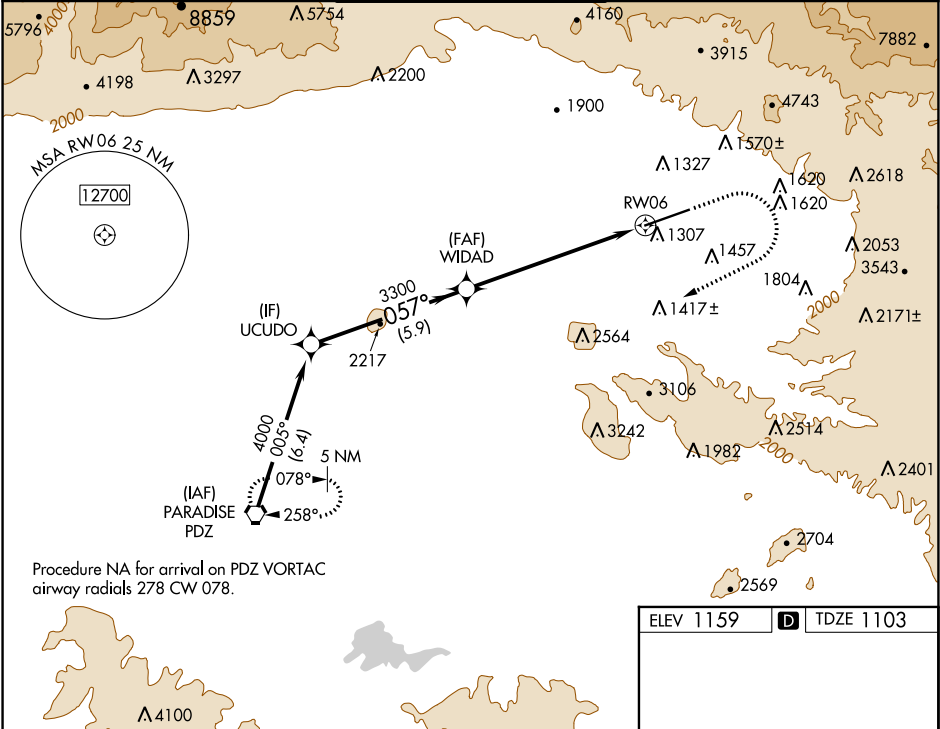
RNAV (GPS) Z RWY 6  
SAN BERNARDINO INTL (SBD)

RNP APCH

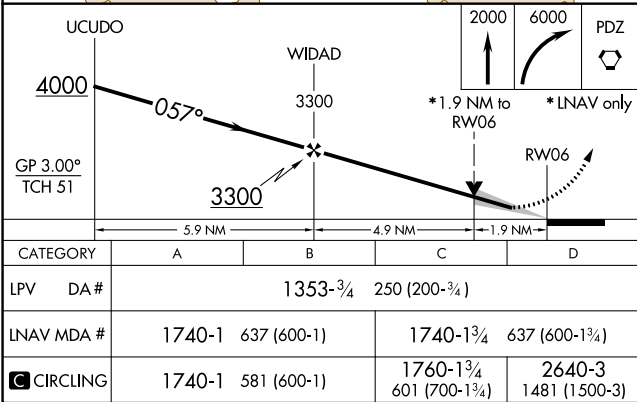
**⚠** Circling NA northwest of Rwy 6-24. When local altimeter setting not received, use Ontario altimeter setting and increase DA to 1426 feet and all visibilities ¼ SM; increase all MDA 80 feet and LNAV Cts C/D and Circling Cts C visibility ¼ SM.

MISSED APPROACH: Climb to 2000 then climbing right turn to 6000 direct PDZ VORTAC and hold, continue climb-in-hold to 6000.  
# Missed approach requires minimum climb of 340 feet per NM to 4000; if unable to meet climb gradient, see RNAV (GPS) Y RWY 6.

ATIS <b>124.175</b>	SOCAL APP CON <b>127.0 318.2</b>	SAN BERNARDINO TOWER ★ <b>119.45 (CTAF) 0</b>	GND CON <b>121.8</b>	UNICOM <b>122.975</b>
------------------------	-------------------------------------	--	-------------------------	--------------------------



Procedure NA for arrival on PDZ VORTAC  
airway radials 278 CW 078.



ELEV 1159 **D** TDZE 1103

**✈** **TVWR** **0.7% UP** **0.8% DOWN** **10000 X 200** **057° to RWY 06**

CATEGORY	A	B	C	D
LPV DA#	1353-¾ 250 (200-¾)			
LNAV MDA #	1740-1 637 (600-1)		1740-1¾ 637 (600-1¾)	
<b>C</b> CIRCLING	1740-1 581 (600-1)		1760-1¾ 601 (700-1¾) 2640-3 1481 (1500-3)	

HIRL Rwy 6-24 **0**  
REIL Rwy 6 and 24 **0**