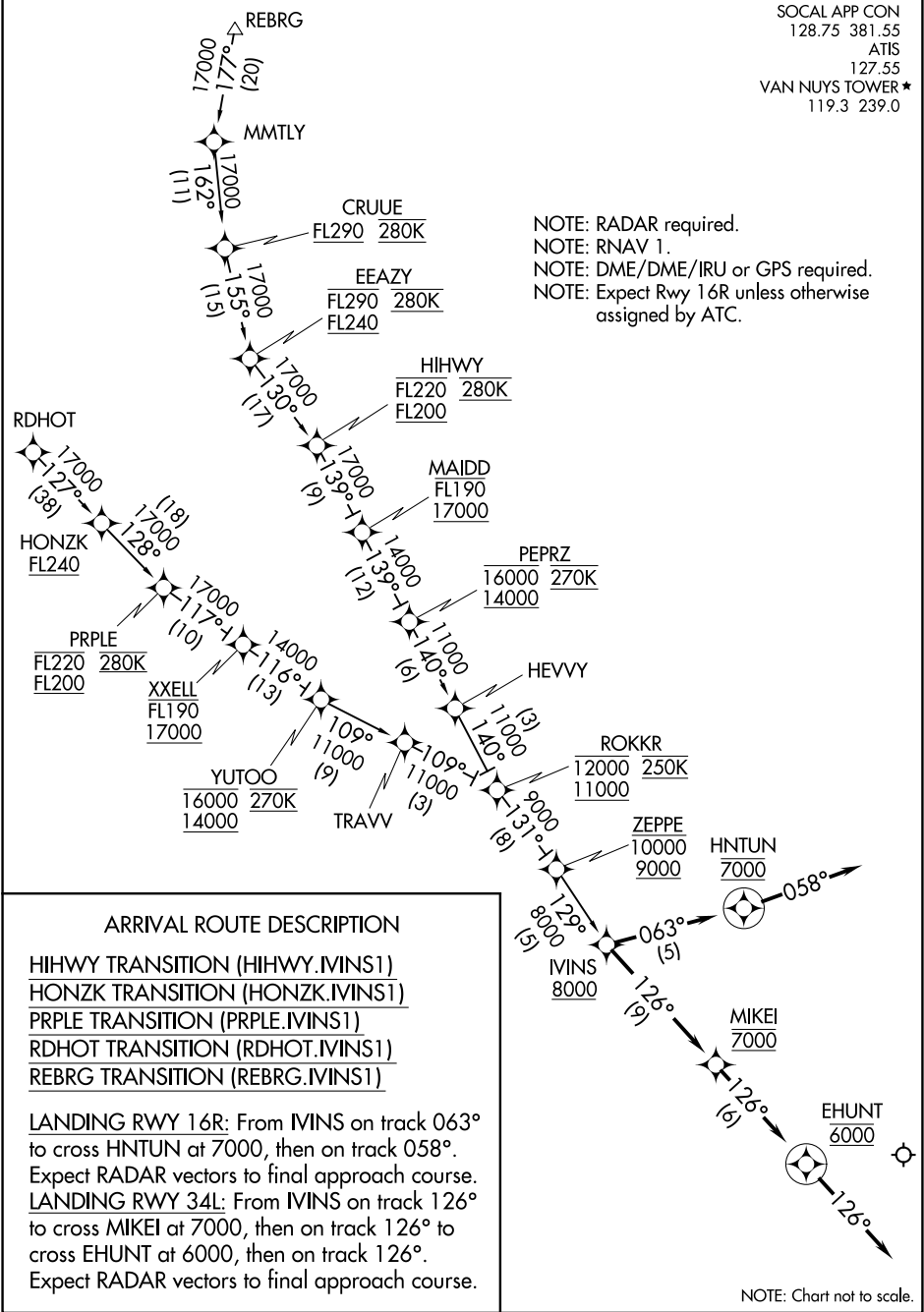


IVINS ONE ARRIVAL (RNAV)

VAN NUYS (VNY)  
VAN NUYS, CALIFORNIA

SOCAL APP CON  
128.75 381.55  
ATIS  
127.55  
VAN NUYS TOWER ★  
119.3 239.0

NOTE: RADAR required.  
NOTE: RNAV 1.  
NOTE: DME/DME/IRU or GPS required.  
NOTE: Expect Rwy 16R unless otherwise  
assigned by ATC.



ARRIVAL ROUTE DESCRIPTION

HIHWY TRANSITION (HIHWY.IVINS1)  
HONZK TRANSITION (HONZK.IVINS1)  
PRPLE TRANSITION (PRPLE.IVINS1)  
RDHOT TRANSITION (RDHOT.IVINS1)  
REBRG TRANSITION (REBRG.IVINS1)

LANDING RWY 16R: From IVINS on track 063° to cross HNTUN at 7000, then on track 058°.  
Expect RADAR vectors to final approach course.  
LANDING RWY 34L: From IVINS on track 126° to cross MIKEL at 7000, then on track 126° to cross EHUNT at 6000, then on track 126°.  
Expect RADAR vectors to final approach course.

NOTE: Chart not to scale.

IVINS ONE ARRIVAL (RNAV)

(IVINS.IVINS1) 01FEB18

VAN NUYS, CALIFORNIA  
VAN NUYS (VNY)