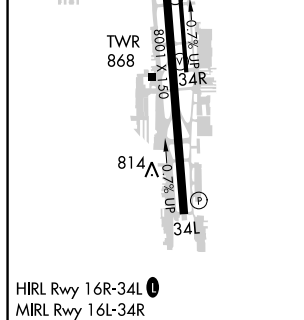
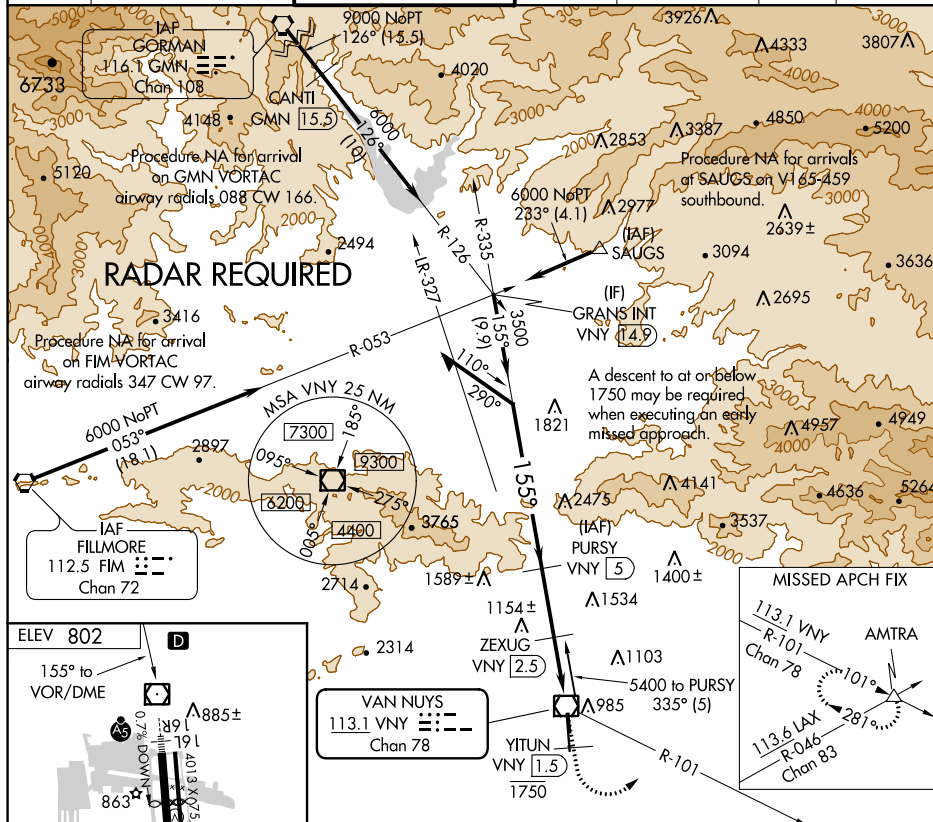


VOR-B
VAN NUYS (VNY)

- | | | |
|------------------------------|---|--|
| <p>V
A</p> | <p>DME required and RADAR required for monitoring of missed approach. Circling Rwy 16L NA at night. Circling NA for Cat D west of Rwy 16R-34L. When local altimeter setting not received, use Burbank altimeter setting and increase all MDA's 20 feet.</p> | <p>MISSED APPROACH: Climb on VNY VOR/DME R-155 to cross YITUN/VNY 1.5 DME at or below 1750 then climbing left turn to 4000 on VNY VOR/DME R-101 to AMTRA INT and hold.</p> |
|------------------------------|---|--|

ATIS 127.55	SOCAL APP CON 120.4 360.6 (NORTH) 134.2 338.2 (WEST)	VAN NUYS TOWER ★ 119.3 (CTAF) 0 239.0	GND CON 121.7	CLNC DEL 126.6 239.0	CPDLC	UNICOM 122.95
----------------	--	--	------------------	-------------------------	-------	------------------



Remain within 10 NM

PURSY VNY 5

5400

335°

155°

3500

2580

2.5 NM

2.5 NM

ZEXUG VNY 2.5

VNY R-155

Cross VNY 1.5

1750

4000

VNY R-101

AMTRA

CATEGORY	A	B	C	D
C CIRCLING	1660-1¼	858 (900-1¼)	1660-2½ 858 (900-2½)	1740-3 938 (1000-3)

SW-3, 31 DEC 2020 to 28 JAN 2021