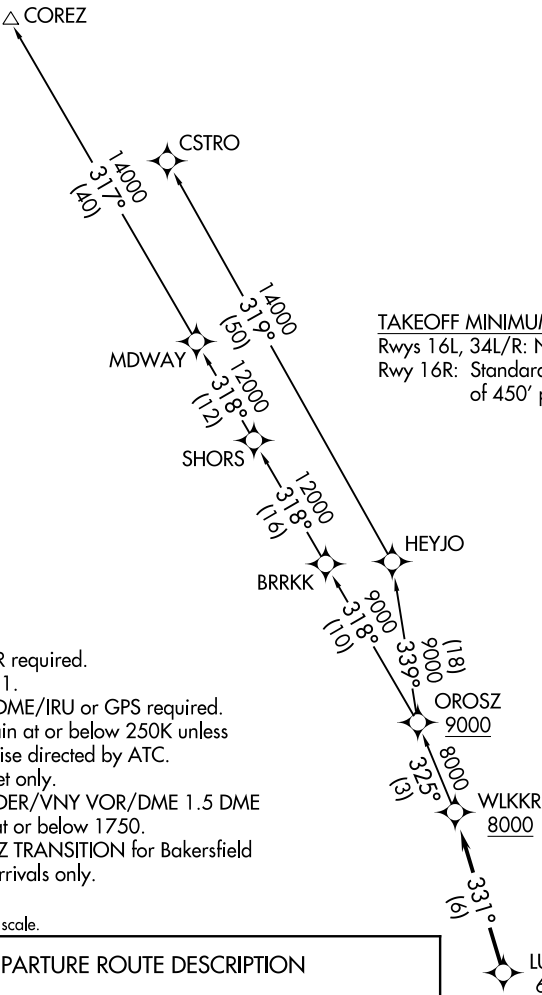


TOP ALTITUDE:  
FL230

ATIS  
127.55  
CLNC DEL  
126.6 239.0  
CPDLC  
GND CON  
121.7  
SOCAL DEP CON  
134.2 338.2



- NOTE: RADAR required.  
NOTE: RNAV 1.  
NOTE: DME/DME/IRU or GPS required.  
NOTE: Maintain at or below 250K unless otherwise directed by ATC.  
NOTE: Turbojet only.  
NOTE: Cross DER/VNY VOR/DME 1.5 DME south at or below 1750.  
NOTE: OROSZ TRANSITION for Bakersfield area arrivals only.

NOTE: Chart not to scale.

**DEPARTURE ROUTE DESCRIPTION**

**TAKEOFF RUNWAY 16R:** Climb on heading 164° to 1303, then climb direct PPRRY, then on heading 210°, or as assigned by ATC, then on vectors to cross LUVVY at or above 6000 then on track 331° to cross WLKKR at or above 8000 thence. . . .

. . . on (transition) maintain FL230. Expect filed altitude 10 minutes after departure.

COREZ TRANSITION (WLKKR4.COREZ)

CSTRO TRANSITION (WLKKR4.CSTRO)

OROSZ TRANSITION (WLKKR4.ROSZ)