

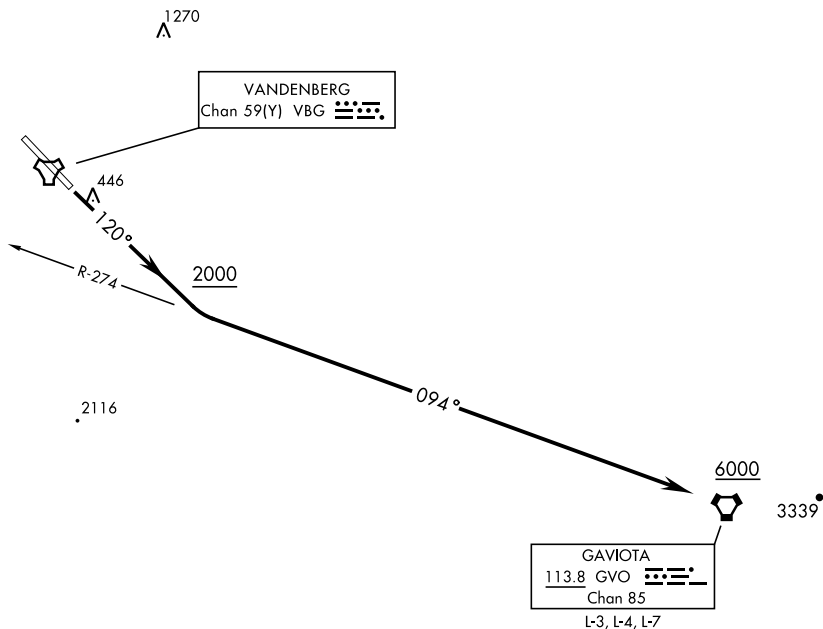
VANDENBERG AFB (KVBG)

LOMPOC, CALIFORNIA

SL-770 [USAF]

Rwy	Knots	60	120	180	240	300	360
12	V/V(fpm)	330	660	990	1320	1650	1980

Minimum Climb Rate to 1500.



Use extreme caution for extensive UAS ops in the vicinity

DEPARTURE ROUTE DESCRIPTION

TAKE-OFF RWY 12: Climb on track 120° to 2000. Then climbing left turn to intercept the GVO VORTAC R-274 inbound to GVO. Cross GVO at or above 6000. Expect vectors to first filed fix/route prior to GVO.

GAVIOTA THREE DEPARTURE (GVO3·GVO)

Amdt 1 28FEB19

LOMPOC, CALIFORNIA
VANDENBERG AFB (KVBG)

SW-3, 31 DEC 2020 to 28 JAN 2021