

HI-ILS or LOC/DME RWY 30

LOC I-VBG 110.1	APCH CRS 305°	Rwy Idg 15,000 TDZE 368 Arpt Elev 368	JAL-770 [USAF]	VANDENBERG AFB (KVBG)
---------------------------	-------------------------	--	----------------	-----------------------

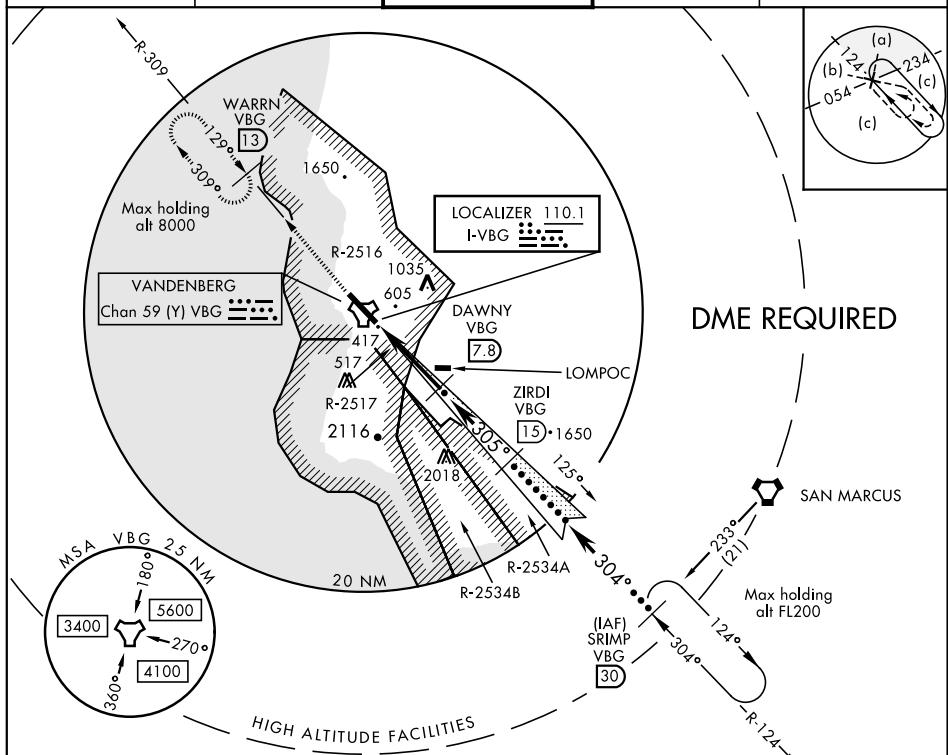
▼ * When ALS inop, increase CAT CDE RVR to 40 and vis to ¾ mile.
 ** When ALS inop, increase CAT CDE vis to 1½ miles.

ALSIF-2

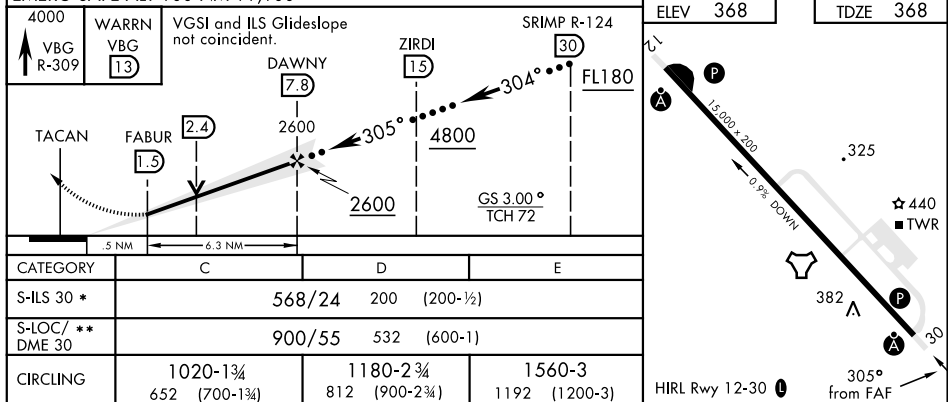


MISSED APPROACH: Climb out VBG TACAN R-309 to WARRN and hold. Continue climb in hold maintain 4000.

ATIS 133.125 257.975	SANTA BARBARA APP/DEP CON 124.15 327.8	VANDENBERG TOWER ★ 124.950 (CTAF) 326.2	GND CON 121.75 275.8	CLNC DEL 121.75 275.8
--------------------------------	---	--	--------------------------------	---------------------------------



EMERG SAFE ALT 100 NM 11,100



HI-ILS or LOC/DME RWY 30