

TACAN VBG Chan <b>59(Y)</b>	APCH CRS <b>129°</b>	Rwy Idg <b>15,000</b> TDZE <b>265</b> Arpt Elev <b>368</b>
--------------------------------	-------------------------	--

VANDENBERG AFB (KVBG)

**T** \* When ALS inop, increase CAT CDE vis to 1 3/8 miles.



**MISSED APPROACH:** Climb out VBG TACAN R-119 until 20 DME (WATKN) and hold. Continue climb in hold maintain 7000.

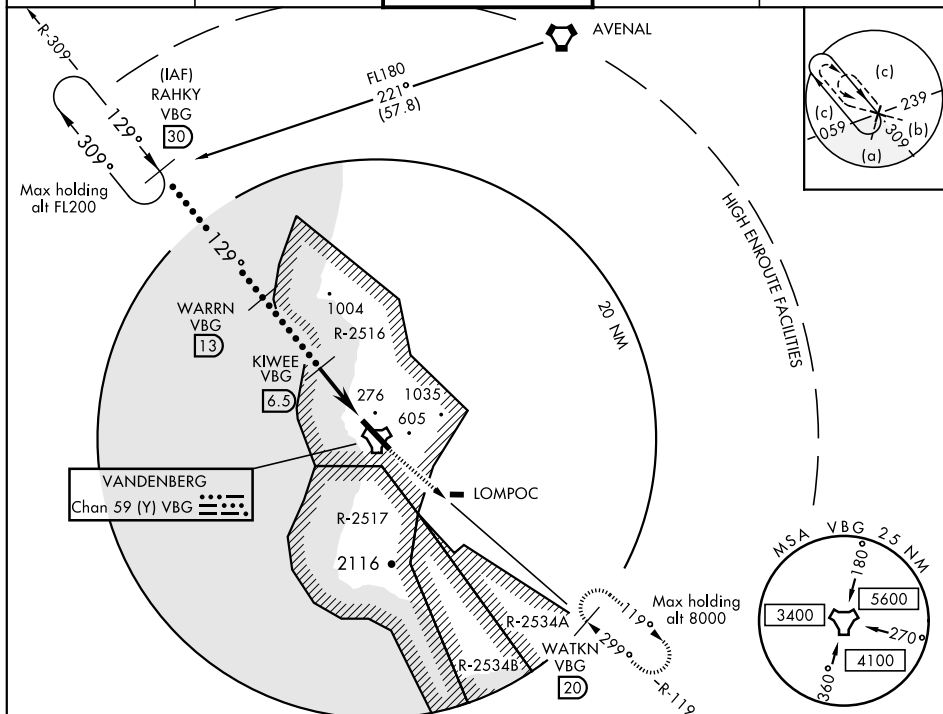
ATIS  
133.125 257.975

SANTA BARBARA  
APP/DEP CON  
**124.15 327.8**

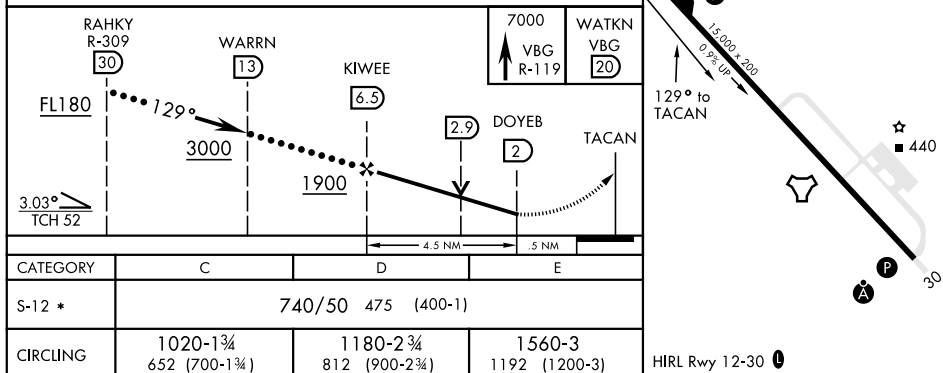
VANDENBERG TOWER ★  
124.950 (CTAF) 326.2

GND CON  
121.75 275.8

CLNC DEL  
**121.75 275.8**



EMERG SAFE ALT 100 NM 11,100



LOMPOC, CALIFORNIA

34°44'N-120°35'W

VANDENBERG AFB (KVBG)

Amdt 5 28FEB19

## HI-TACAN RWY 12

SW-3, 31 DEC 2020 to 28 JAN 2021