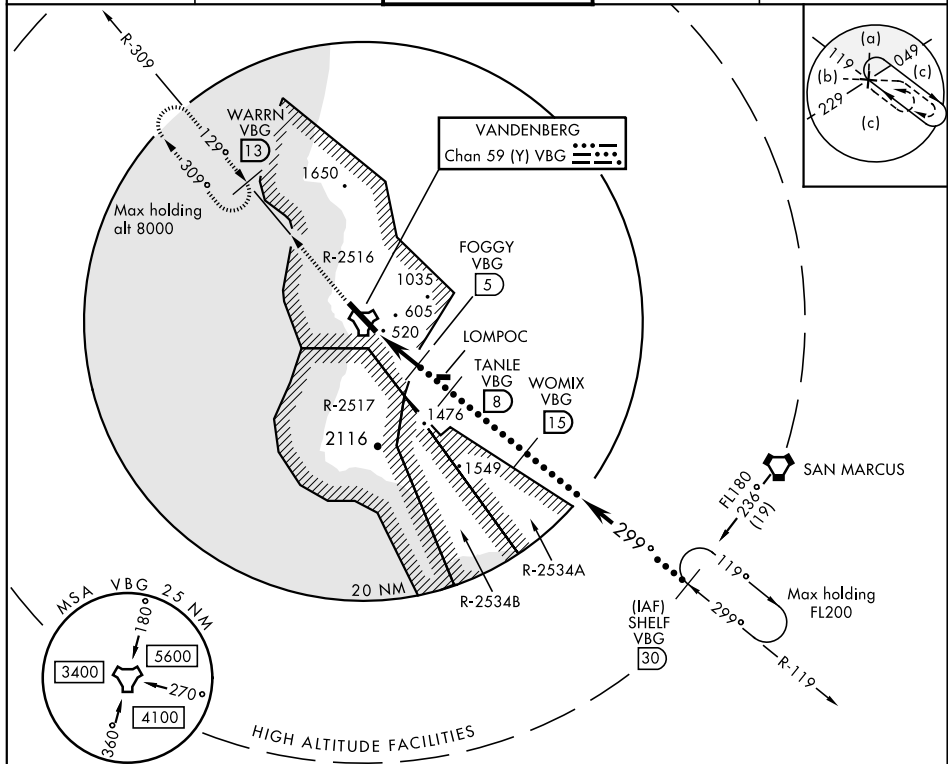


TACAN VBG Chan <b>59(Y)</b>	APCH CRS <b>299°</b>	Rwy Idg <b>15,000</b> TDZE <b>368</b> Arpt Elev <b>368</b>	JAL-770 [USAF]	VANDENBERG AFB (KVBG)
--------------------------------	-------------------------	--	----------------	-----------------------

<p><b>V</b> *When ALS inop, increase CAT CDE vis to 1½ miles.</p>	<p>ALSF-2</p>	<p>MISSED APPROACH: Climb out VBG TACAN R-309 to WARRN and hold. Continue climb in hold maintain 4000.</p>
---	---------------	--

<p>ATIS <b>133.125 257.975</b></p>	<p>SANTA BARBARA APP/DEP CON <b>124.15 327.8</b></p>	<p>VANDENBERG TOWER ★ <b>124.950</b> (CTAF) <b>326.2</b></p>	<p>GND CON <b>121.75 275.8</b></p>	<p>CLNC DEL <b>121.75 275.8</b></p>
--	--	--	--	---



EMERG SAFE ALT 100 NM 11,100

4000 ↑ VBG R-309	WARRN VBG 13	FOGGY VBG 5	TANLE VBG 8	WOMIX VBG 15	SHELF R-117 30
TACAN	WIMRI 1.5	2.5	2400	4600	FL180
5 NM	3.5 NM				3.20° TCH 71
CATEGORY	C	D	E		
S-30 *	920-60	552 (600-1½)			
CIRCLING	1020-1¾ 652 (700-1¾)	1180-2¾ 812 (900-2¾)	1560-3 1192 (1200-3)		

