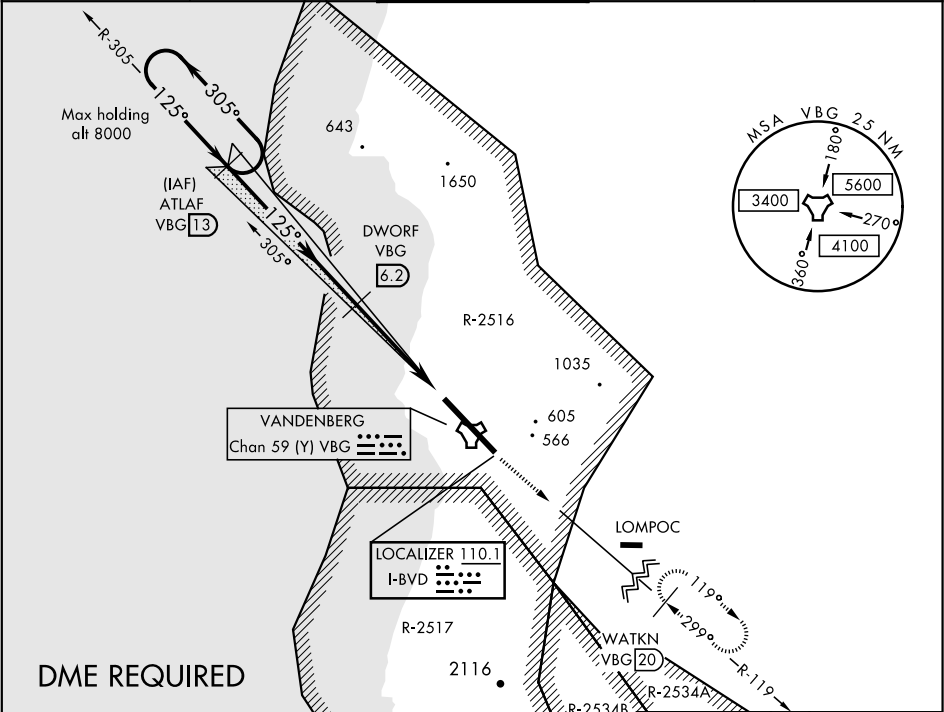


ILS or LOC/DME RWY 12

LOC I-BVD 110.1	APCH CRS 125°	Rwy Idg 15,000 TDZE 265 Arpt Elev 368	AL-770 [USAF]	VANDENBERG AFB (KVBG)
▼ * When ALS inop, increase RVR to 40 and vis to ¾ mile. ** When ALS inop, increase CAT AB RVR to 55 and vis to 1 mile, CAT CDE vis to 1¼ miles.			ALSF-2 A	MISSED APPROACH: Climb out VBG TACAN R-119 until 20 DME (WATKN) and hold. Continue climb in hold maintain 7000.

ATIS 133.125 257.975	SANTA BARBARA APF/DEP CON 124.15 327.8	VANDENBERG TOWER ★ 124.95 0 (CTAF) 326.2	GND CON 121.75 275.8	CLNC DEL 121.75 275.8
--------------------------------	---	---	--------------------------------	---------------------------------



EMERG SAFE ALT 100 NM 11,100						ELEV 368	TDZE 265
						125° from FAF	315
CATEGORY	A	B	C	D	E	HIRL Rwy 12-30	
S-ILS 12 *	465/24		200	(100-½)		FAF to MAP 4.7 NM	
S-LOC/DME 12 **	700/24 435 (400-½)		700/40 435 (400-¾)		Knots		60 90 120 150 180
CIRCLING	980-1 612 (700-1)	1000-1 632 (700-1)	1020-1¾ 652 (700-1¾)	1180-2¾ 812 (900-2¾)	1560-3 1192 (1200-3)	Min:Sec	4:42 3:08 2:21 1:53 1:34

ILS or LOC/DME RWY 12

SW-3, 31 DEC 2020 to 28 JAN 2021

SW-3, 31 DEC 2020 to 28 JAN 2021