

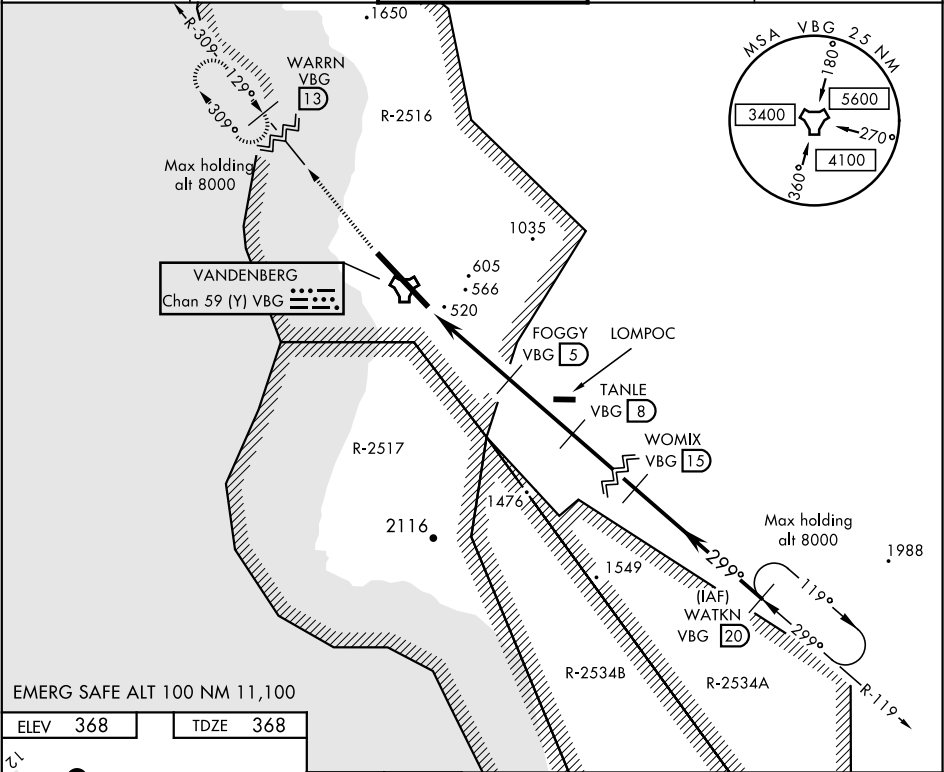
TACAN VBG Chan 59(Y)	APCH CRS 299°	Rwy Idg 15,000 TDZE 368 Arpt Elev 368
--------------------------------	-------------------------	--

AL-770 [USAF]

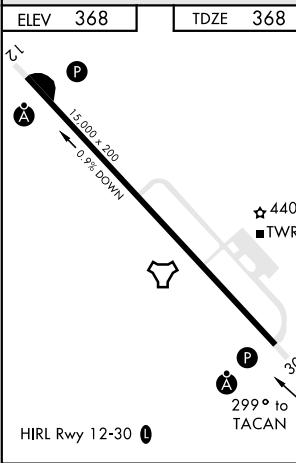
VANDENBERG AFB (KVBG)

▼ * When ALS inop, increase CAT AB RVR to 55 and vis to 1 mile, CAT CDE vis to 1½ miles.	ALSF-2 	MISSED APPROACH: Climb out VBG TACAN R-309 to WARRN and hold. Continue climb in hold maintain 4000.
---	------------	---

ATIS 133.125 257.975	SANTA BARBARA APP/DEP CON 124.15 327.8	VANDENBERG TOWER ★ 124.950 (CTAF) 326.2	GND CON 121.75 275.8	CLNC DEL 121.75 275.8
--------------------------------	---	--	--------------------------------	---------------------------------



EMERG SAFE ALT 100 NM 11,100



4000 VBG R-309	WARRN VBG 13	WOMIX VBG 15	TANLE VBG 8	FOGGY VBG 5	WATKN R-119 20
TACAN WIMRI 1.5 2.5 1800 2400 4600 6000 3.20° TCH 72					
CATEGORY	A	B	C	D	E
S-30 *	920/24	552 (600-½)	920/60	552 (600-1½)	
CIRCLING	980-1 612 (700-1)	1000-1 632 (700-1)	1020-1¾ 652(700-1¾)	1180-2¾ 812(900-2¾)	1560-3 1192(1200-3)

SW-3, 31 DEC 2020 to 28 JAN 2021

SW-3, 31 DEC 2020 to 28 JAN 2021