

ATIS  
133.125 257.975  
GND CON  
121.75 275.8  
CLNC DEL  
121.75 275.8  
VANDENBERG TOWER ★  
124.95 326.2  
SANTA BARBARA DEP CON  
124.15 327.8

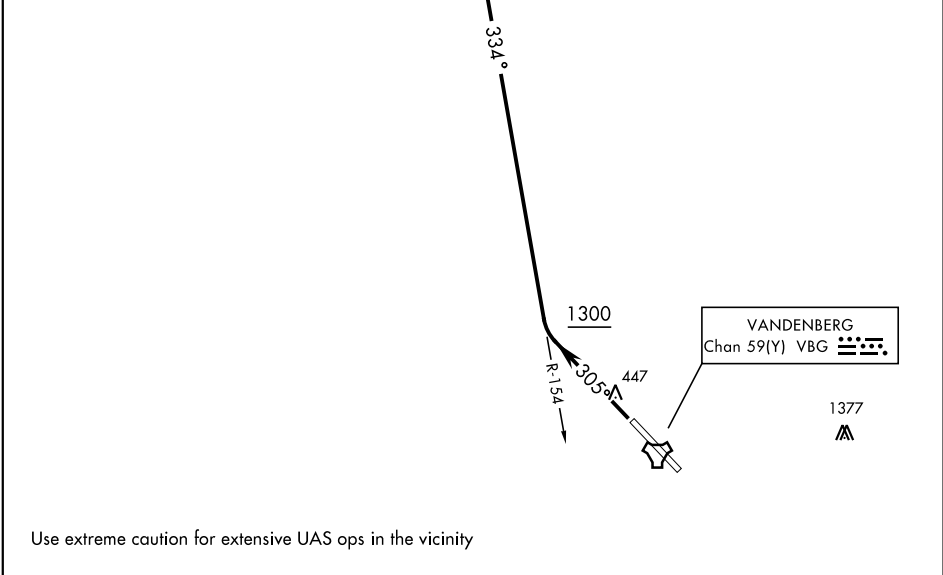
SL-770 [USAF]

Rwy	Knots	60	120	180	240	300	360
30	V/V(fpm)	280	560	840	1120	1400	1680

2808 • Minimum Climb Rate to 700.

4000

MORRO BAY  
112.4 MQO  
Chan 71  
L-3, L-7



▼

DEPARTURE ROUTE DESCRIPTION

TAKE-OFF RWY 30: Climb on track 305° to intercept MQO VORTAC R-154 at or above 1300 direct to MQO. Cross MQO at or above 4000. Expect vectors to first filed fix/route prior to MQO.