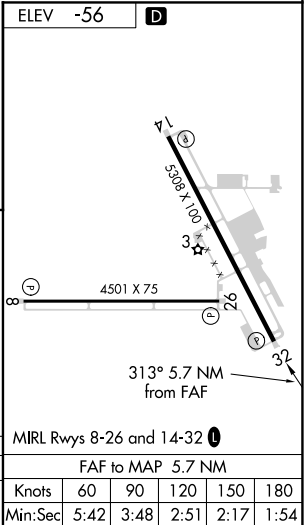
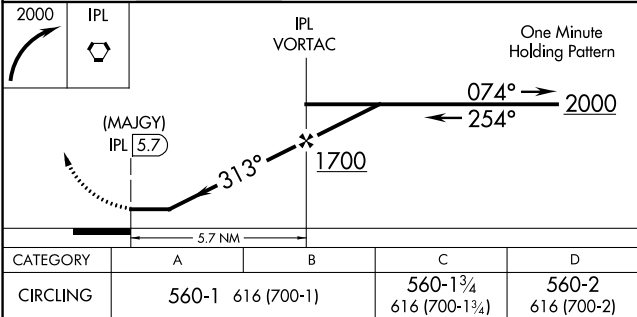
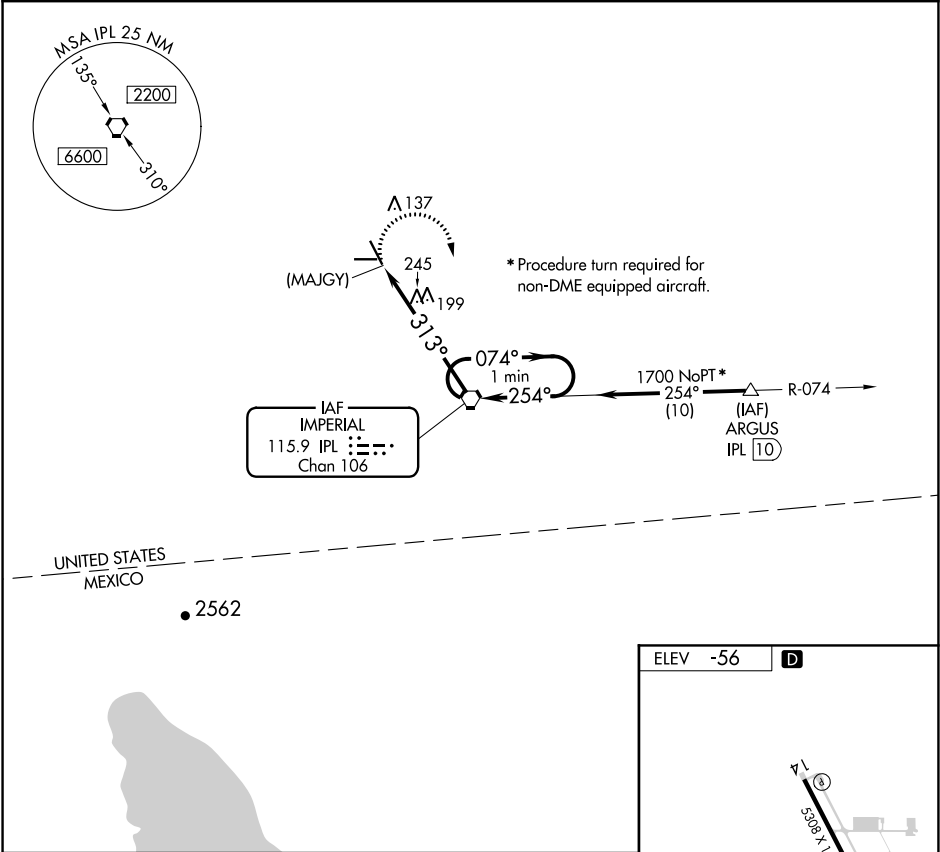


VORTAC IPL 115.9 Chan 106	APP CRS 313°	Rwy Idg TDZE Apt Elev	N/A N/A -56
---	------------------------	-----------------------------	--------------------------

VOR or GPS-A
IMPERIAL COUNTY (IPL)

	MISSED APPROACH: Climbing right turn to 2000 direct IPL VORTAC and hold.
---	---

ASOS 132.175	LOS ANGELES CENTER 128.6 291.7	UNICOM 122.7 (CTAF) 0
------------------------	--	---------------------------------



SW-3, 31 DEC 2020 to 28 JAN 2021

SW-3, 31 DEC 2020 to 28 JAN 2021