


SAN DIEGO, CALIFORNIA

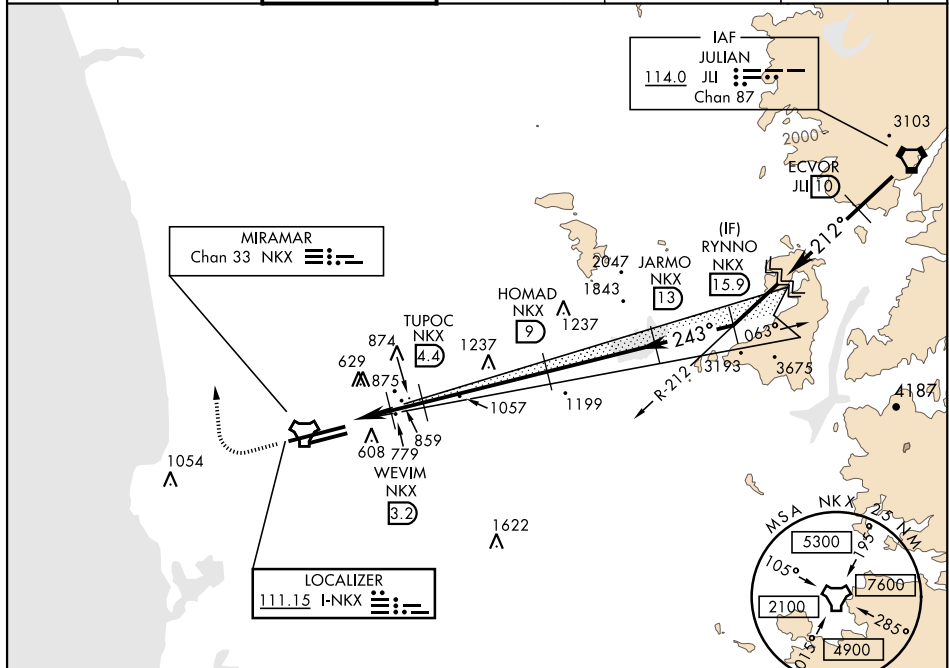
20310

# ILS or LOC/DME RWY 24R

LOC I-NKX <b>111.15</b>	APCH CRS <b>243°</b>	Rwy Idg <b>8001</b>	24L <b>12,000</b>	24R <b>475</b>
		TDZE <b>477</b>		
		Arpt Elev <b>477</b>		

AL-903 [USN] MIRAMAR MCAS (JOE FOSS FLD) (KNKX)

RADAR required.			<div>ALSF-1</div> <div></div>	MISSED APPROACH: Climb to 1500, then climbing right turn to 3000 via heading 340°. Expect radar vectors.		
<div>▼ * When ALS inop, increase CAT ABCDE vis to ¾ mile.</div> <div>** When ALS inop, increase CAT AB vis to 1 mile, CAT CDE vis to 1½ miles.</div> <div>*** CAT E circling not authorized S of Rwy 6R-24L.</div>						
ATIS ★ 133.475 352.0	SOCAL APP CON 132.2 269.1	FOSS TOWER ★ 135.2 298.925	GND CON 128.625 307.325	CLNC DEL 125.975 254.325	LA CENTER 291.7	ASR/ PAR



EMERG SAFE ALT 100 NM 13,600

1500

3000

hdg 340°

VGSI and descent angles not coincident.

ELEV 477

TDZE 24L 477

TDZE 24R 475

NKX TACAN

ZENPA NKX 1.8

WEVIM NKX 3.2

TUPOC NKX 4.4

HOMAD NKX 9

JARMO NKX 13

RYNNNO NKX 15.9

ECVOR JULI 10

VORTAC

2998

243°

212°

6900

8000

GS 3.00°

TCH 53

4 NM

1.4 NM

1.2 NM

4.6 NM

CATEGORY	A	B	C	D	E
S-ILS 24R*	675 - ½		200	(200-½)	
S-LOC/DME 24R**	920- ½	445 (500-½)	920-¾	445 (500-¾)	
SIDESTEP 24L	920-1	443 (500-1)	920-1½	443 (500-1½)	
CIRCLING***	940-1 463 (500-1)	960-1 483 (500-1)	960-1½ 483 (500-1½)	1180-2¼ 703 (800-2¼)	1360-3 883 (900-3)

243° 7.6 NM from FAF

12,000 x 200

8001 x 200

1000 x 100

243°

063°

0.4% DOWN

0.4% DOWN

0.4% DOWN

TWR

P

P

P

P

P

P

P

P

P

P

P

P

P

P

P

P

P

P

P

P

P

P

P

P

P

P

P

P

P

P

P

P

P

P

P

P

P

P

P

P

P

P

P

P

P

P

P

P

P

P

P

P

P

P

P

P

P

P

P

P

P

P

P

P

P

P

P

P

P

P

P

P

P

P

P

P

P

P

P

P

P

P

P

P

P

P

P

P

P

P

P

P

P

P

P

P

P

P

P

P

P

P

P

P

P

P

P

P

P

P

P

P

P

P

P

P

P

P

P

P

P

P

P

P

P

P

P

P

P

P

P

P

P

P

P

P

P

P

P

P

P

P

P

P

P

P

P

P

P

P

P

P

P

P

P

P

P

P

P

P

P

P

P

P

P

P

P

P

P

P

P

P

P

P

P

P

P

P

P

P

P

P

P

P

P

P

P

P

P

P

P

P

P

P

P

P

P

P

P

P

P

P

P

P

P

P

P

P

P

P

P

P

P

P

P

P

P

P

P

P

P

P

P

P

P

P

P

P

P

P

P

P

P

P

P

P

P

P

P

P

P

P

P

P

P

P

P

P

P

P

P

P

P

P

P

P

P

P

P

P

P

P

P

P

P

P

P

P

P

P

P

P

P

P

P

P

P

P

P

P

P

P

P

P

P

P

P

P

P

P

P

P

P

P

P

P

P

P

P

P

P

P

P

P

P

P

P

P

P

P

P

P

P

P

P

P

P

P

P

P

P

P

P

P

P

P

P

P

P

P

P

P

P

P

P

P

P

P

P

P

P

P

P

P

P

P

P

P

P

P

P

P

P

P

P

P

P

P

P

P

P

P

P

P

P

P

P

P

P

P

P

P

P

P

P

P

P

P

P

P

P

P

P

P

P

P

P

P

P

P

P

P

P

P

P

P

P

P

P

P

P

P

P

P

P

P

P

P

P

P

P

P

P

P

P

P

P

P

P

P

P

P

P

P

P

P

P

P

P

P

P

P

P

P

P

P

P

P

P

P

P

P

P

P

P

P

P

P

P

P

P

P

P

P

P

P

P

P

P

P

P

P

P

P

P

P

P

P

P

P

P

P

P

P

P

P

P

P

P

P

P

P

P

P

P

P

P

P

P

P

P

P

P

P

P

P

P

P

P

P

P

P

P

P

P

P

P

P

P

P

P

P

P

P

P

P

P

P

P

P

P

P

P

P

P

P

P

P

P

P

P

P

P

P

P

P

P

P

P

P

P

P

P

P

P

P

P

P

P

P

P

P

P

P

P

P

P

P

P

P

P

P

P

P

P

P

P

P

P

P

P

P

P

P

P

P

P

P

P

P

P

P

P

P

P

P

P

P

P

P

P

P

P

P

P

P

P

P

P

P

P

P

P

P

P

P

P

P

P

P

P

P

P

P

P

P

P

P

P

P

P

P

P

P

P

P

P

P

P

P

P

P

P

P

P

P

P

P

P

P

P

P

P

P

P

P

P

P

P

P

P

P

P

P

P

P

P

P

P

P

P

P

P

P

P

P

P

P

P

P

P

P

P

P

P

P

P

P

P

P

P

P

P

P

P

P

P

P

P

P

P

P

P

P

P

P

P

P

P

P

P

P

P

P

P

P

P

P

P

P

P

P

P

P

P

P

P

P

P

P

P

P

P

P

P

P

P

P

P

P

P

P

P

P

P

P

P

P

P

P

P

P

P

P

P

P

P

P

P

P

P

P

P

P

P

P

P

P

P

P

P

P

P

P

P

P

P

P

P

P

P

P

P

P

P

P

P

P

P

P

P

P

P

P

P

P

P

P

P

P

P

P

P

P

P

P

P

P

P

P

P

P

P

P

P

P

P

P

P

P

P

P

P

P

P

P

P

P

P

P

P

P

P

SAN DIEGO, CALIFORNIA 32° 52' N-117° 09' W MIRAMAR MCAS (JOE FOSS FLD) (KNKX)

Amtd 3 13SEP18

# ILS or LOC/DME RWY 24R

SW-3, 31 DEC 2020 to 28 JAN 2021