

SAN DIEGO, CALIFORNIA

20310

RNAV (GPS) RWY 24L

WAAS CH 54028 W24A	APCH CRS 243°	Rwy Idg TDZE Arpt Elev	8001 477 477
--------------------------	------------------	------------------------------	--------------------

AL-903 [USN]

MIRAMAR MCAS (JOE FOSS FLD) (KNKX)

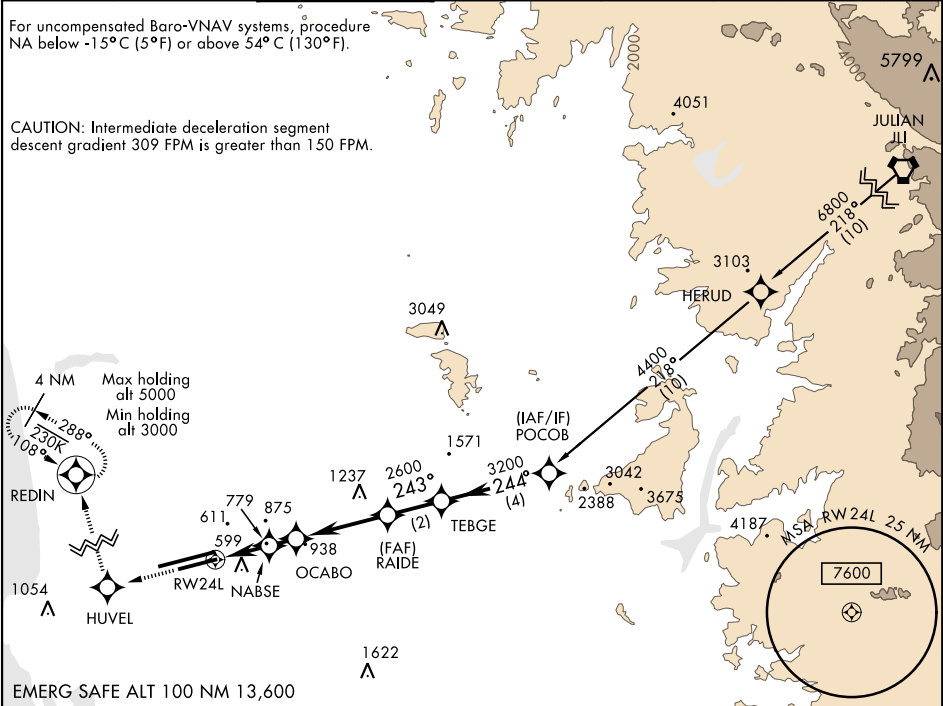
DME/DME RNP-0.3 NA.

MISSED APPROACH: Climb to 3000 direct HUVEL, 288° track to REDIN and hold.

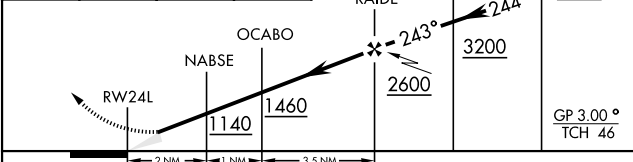
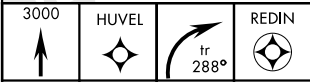
ATIS ★ 133.475 352.0	SOCAL APP CON 132.2 269.1	FOSS TOWER ★ 135.2 298.925 0	GND CON 128.625 307.325	CLNC DEL 125.975 254.325	LA CENTER 291.7	ASR/ PAR
----------------------------	---------------------------------	------------------------------------	-------------------------------	--------------------------------	--------------------	-------------

For uncompensated Baro-VNAV systems, procedure NA below -15°C (5°F) or above 54°C (130°F).

CAUTION: Intermediate deceleration segment descent gradient 309 FPM is greater than 150 FPM.

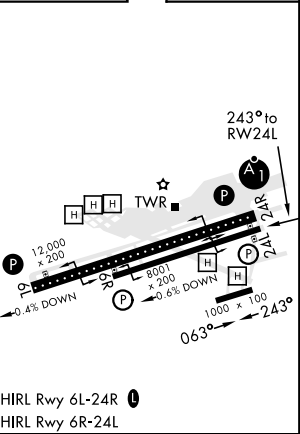


EMERG SAFE ALT 100 NM 13,600



CATEGORY	A	B	C	D
LPV DA	677-¾ 200 (200-¾)			
LNAV/VNAV DA	733-¾ 256 (300-¾)	744-¾ 267 (300-¾)	752-¾ 275 (300-¾)	763-¾ 286 (300-¾)
LNAV MDA	1040-1 563 (600-1)		1040-1½ 563 (600-1½)	
CIRCLING	1040-1 563 (600-1)		1040-1½ 563 (600-1½)	1180-2¼ 703 (800-2¼)

ELEV 477	TDZE 477
----------	----------



SAN DIEGO, CALIFORNIA

32° 52' N - 117° 09' W

MIRAMAR MCAS (JOE FOSS FLD) (KNKX)

Amtd 3 13SEP18

RNAV (GPS) RWY 24L

SW-3, 31 DEC 2020 to 28 JAN 2021

SW-3, 31 DEC 2020 to 28 JAN 2021