

OXNARD, CALIFORNIA

ILS Z or LOC/DME RWY 21

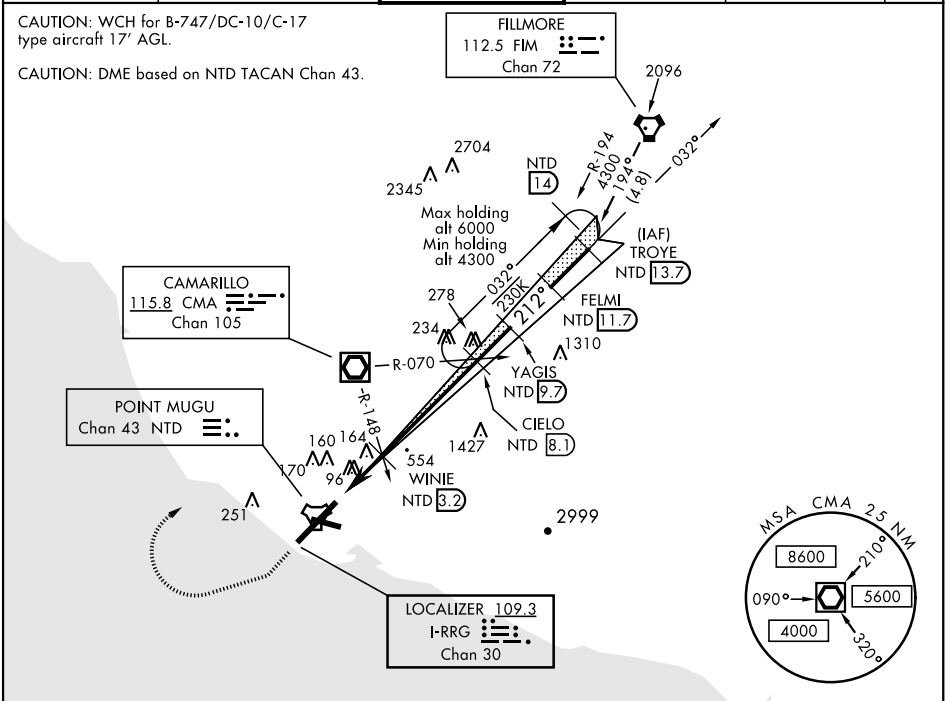
LOC/DME I-RRG <b>109.3</b> Chan 30	APCH CRS <b>212°</b>	Rwy Idg <b>11,102</b> TDZE <b>13</b> Arpt Elev <b>13</b>
--	-------------------------	--

AL-925 [USN]

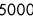
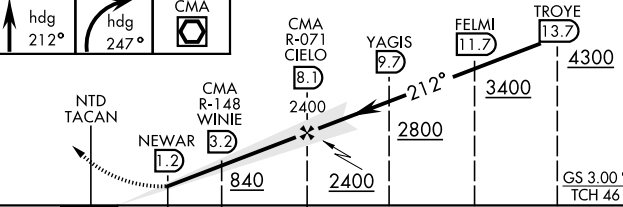
POINT MUGU NAS  
(NAVAL BASE VENTURA CO)(KNTD)

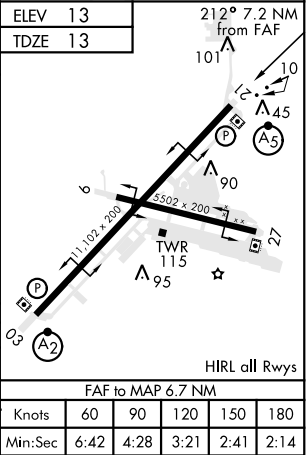
DME or RADAR required.	MALSR 	MISSED APPROACH: Climb to 500 via hdg 212°, then climbing right turn to 3000 via hdg 247°, then climbing right turn to 5000 direct CMA VOR/DME, then via CMA R-070 to CIELO and hold.
* When ALS inop, increase vis to ¾ mile. ** When ALS inop, increase vis CAT AB to 1 mile, CAT CD vis to 1½ miles. *** Circling not authorized E of Rwy 3-21.		

ATIS ★ <b>125.55 363.05</b>	POINT MUGU APP CON <b>128.65 307.275</b>	POINT MUGU TOWER ★ <b>124.85 290.375</b>	GND CON <b>121.6 360.2</b>	CLNC DEL <b>120.75 279.55</b>	ASR/ PAR
--------------------------------	---	---	-------------------------------	----------------------------------	-------------



EMERG SAFE ALT 100 NM 12,100

500 hdg 212°	3000 hdg 247°	5000 CMA 																						
 <p>The diagram shows a flight path starting from the left, passing through several navigation aids, and ending at TROYE. The path is marked with altitudes and distances. Key features include: a heading of 212° for the first segment, a heading of 247° for the second segment, a CMA symbol, NTD TACAN, NEWAR 1.2, CMA R-148 WINIE 3.2, CMA R-071 CIELO 8.1, YAGIS 9.7, FELMI 11.7, and TROYE 13.7. Altitudes are marked at 2400, 2800, 3400, and 4300. A distance of 4.9 NM is indicated between two points. The path ends at TROYE with a GS 3.00° and TCH 46.</p>																								
<table border="1"><tr><td>CATEGORY</td><td>A</td><td>B</td><td>C</td><td>D</td></tr><tr><td>S-ILS 21 *</td><td colspan="4">213-½ 200 (200-½)</td></tr><tr><td>S-LOC 21 **</td><td>420-½</td><td>407 (500-½)</td><td>420-¾</td><td>407 (500-¾)</td></tr><tr><td>CIRCLING ***</td><td>440-1 427 (500-1)</td><td>480-1 467 (500-1)</td><td>480-1½ 467 (500-1½)</td><td>580-2 567 (600-2)</td></tr></table>					CATEGORY	A	B	C	D	S-ILS 21 *	213-½ 200 (200-½)				S-LOC 21 **	420-½	407 (500-½)	420-¾	407 (500-¾)	CIRCLING ***	440-1 427 (500-1)	480-1 467 (500-1)	480-1½ 467 (500-1½)	580-2 567 (600-2)
CATEGORY	A	B	C	D																				
S-ILS 21 *	213-½ 200 (200-½)																							
S-LOC 21 **	420-½	407 (500-½)	420-¾	407 (500-¾)																				
CIRCLING ***	440-1 427 (500-1)	480-1 467 (500-1)	480-1½ 467 (500-1½)	580-2 567 (600-2)																				



OXNARD, CALIFORNIA  
Amdt 3 31DEC20

34°07'N-119°07'W

POINT MUGU NAS(KNTD)  
(NAVAL BASE VENTURA CO)

ILS Z or LOC/DME RWY 21

SW-3, 31 DEC 2020 to 28 JAN 2021

SW-3, 31 DEC 2020 to 28 JAN 2021