

TACAN NTD Chan 43	APCH CRS 216°	Rwy Idg 11,102 TDZE 13 Arpt Elev 13
----------------------	------------------	---

AL-925 [USN]

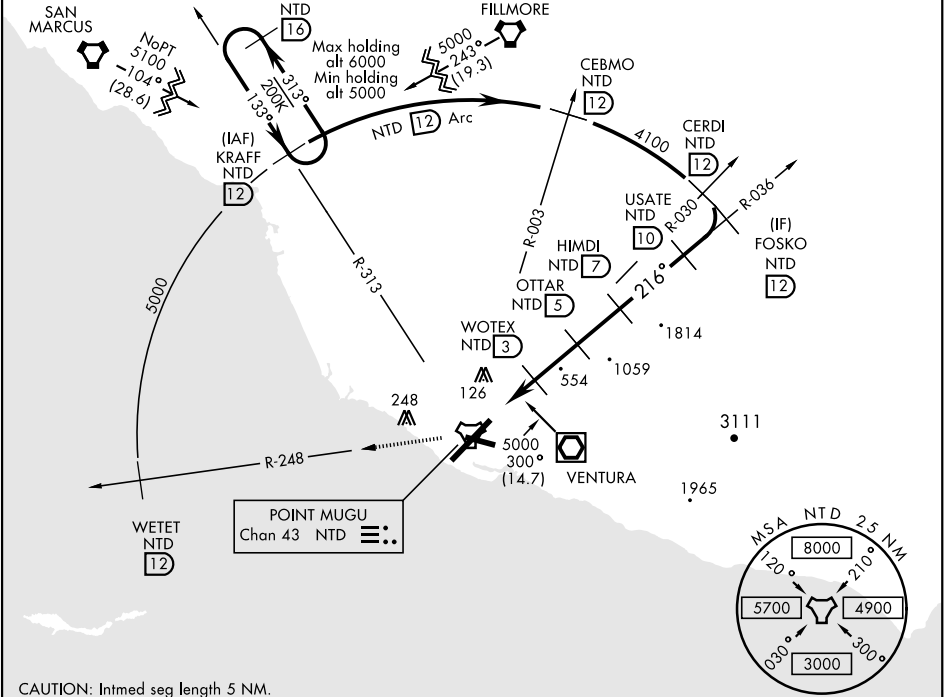
TACAN RWY 21  
POINT MUGU NAS (NAVAL BASE VENTURA CO) (KNTD)

⚠ \* When ALS inop, increase CAT AB vis to 1 mile, CAT CD vis to 1 3/8 miles.  
\*\* Circling not authorized E of Rwy 3-21.



MISSED APPROACH: Climb to 5000 via NTD TACAN R-036 to NTD, then via NTD R-248 to WETET. Arc NW on NTD 12 DME arc to KRAFF and hold.

ATIS ★ 125.55 363.05	POINT MUGU APP CON 128.65 307.275	POINT MUGU TOWER ★ 124.85 290.375	GND CON 121.6 360.2	CLNC DEL 120.75 279.55	ASR/ PAR
-------------------------	--------------------------------------	--------------------------------------	------------------------	---------------------------	-------------



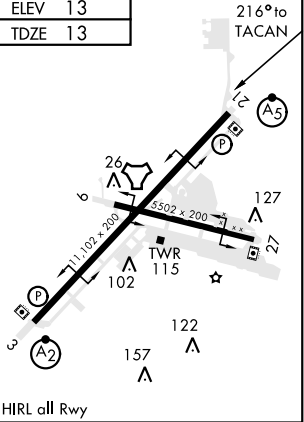
CAUTION: Intmd seg length 5 NM.

EMERG SAFE ALT 100 NM 12,100

5000 NTD R-036	NTD	WETET NTD 12	Arc NW to KRAFF
----------------------	-----	--------------------	-----------------------

† Or as assigned.  
VGSI and descent angles not coincident.

ELEV 13
TDZE 13



	TACAN	ZATPO	WOTEX	OTTAR	HIMDI	USATE	FOSKO	CERDI	CEBMO	KRAFF
		1.6	3	5	7	10	12	12	12	12
		860	1500	2400	3300	3900	4100	5000		
CATEGORY	A	B	C	D						
S-21 *	480-3/8	467 (500-3/8)	480-1	467 (500-1)						
CIRCLING **	480-1	467 (500-1)	480-1 1/2	580-2						