

TACAN NTD Chan 43	APCH CRS 026°	Rwy ldg 11,102 TDZE 10 Arpt Elev 13
----------------------	------------------	---

AL-925 [USN]

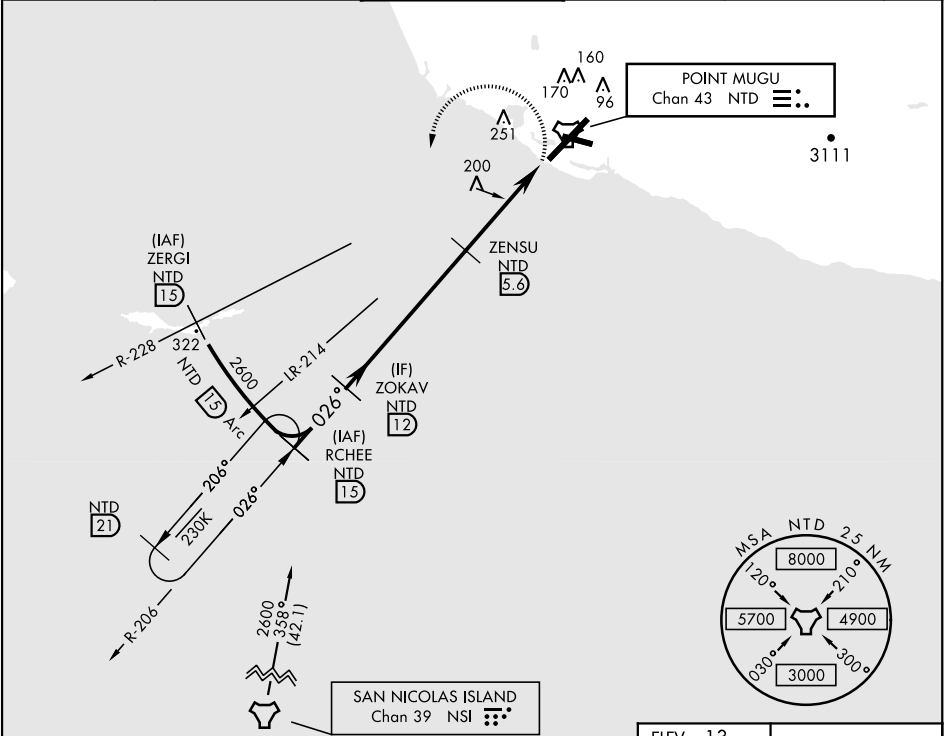
TACAN Z RWY 3  
POINT MUGU NAS  
(NAVAL BASE VENTURA CO)(KNTD)

▼ \*When ALS inop, increase CAT AB vis to 1 mile,  
CAT CDE vis to 1½ miles.  
\*\*Circling not authorized E of Rwy 3-21.

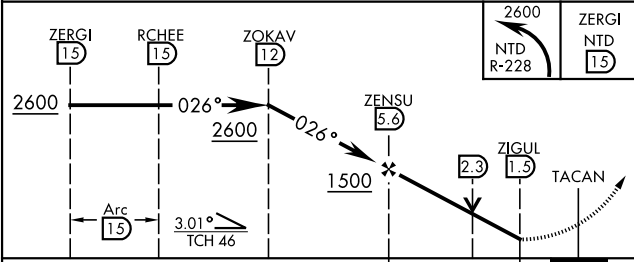
SALSF  
A2

MISSED APPROACH: Climbing left turn to 2600. Intercept  
the NTD TACAN R-228, then via NTD R-228 to ZERGI, Arc  
SW of NTD via the 15 DME arc to RCHEE and hold.

ATIS ★ 125.55 363.05	POINT MUGU APP CON 128.65 307.275	POINT MUGU TOWER ★ 124.85 290.375	GND CON 121.6 360.2	CLNC DEL 120.75 279.55	ASR/ PAR
-------------------------	--------------------------------------	--------------------------------------	------------------------	---------------------------	-------------

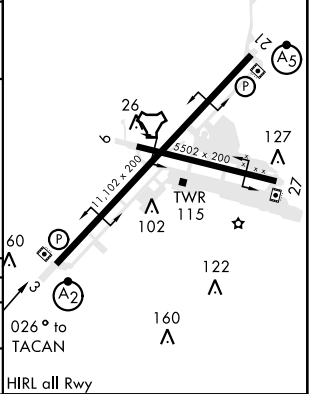


EMERG SAFE ALT 100 NM 12,100



CATEGORY	A	B	C	D	E
S-3 *	460-¾ 450 (500-¾)		460-1 450 (500-1)		
CIRCLING **	460-1 447 (500-1)	480-1 467 (500-1)	480-1½ 467 (500-1½)	580-2 567 (600-2)	NA

ELEV 13
TDZE 10



SW-3, 31 DEC 2020 to 28 JAN 2021

SW-3, 31 DEC 2020 to 28 JAN 2021