


LOS ALAMITOS, CALIFORNIA

RNAV (GPS) RWY 22L

APCH CRS 223°	Rwy Idg 8001 TDZE 35 Arpt Elev 35
-------------------------	--

AL-953 (USA)

LOS ALAMITOS AAF (KSLI)

<p>V</p> <p>A NA</p>	<p>* When ALS inop, increase CAT D vis to 1 mile.</p> <p>** When ALS inop using SANTA ANA altimeter setting, increase CAT D vis to 1 1/8 mile.</p> <p>*** Circling not authorized N of Rwy 4L-22R.</p>	<p>SALS</p> <p>A2</p> 	<p>MISSED APPROACH: Climb to 500 then climbing left turn to 2100 direct ALBAS and hold.</p>
------------------------------------	--	---	--

ATIS★ 118.875 379.975	SOCAL APP CON 125.35 316.125	TOWER★ 123.85 251.15	GND CON 126.95 257.95	ASR/PAR
--------------------------	---------------------------------	-------------------------	--------------------------	---------

DME/DME RNP 0.3 N/A.

When Los Alamitos altimeter setting not available, use Santa Ana altimeter setting.

VDP NA when using Santa Ana altimeter setting.

3035

Procedure NA for arrivals
on POM VORTAC airway R-112
CW R-254.

473

MSA RV222 25 NM

770

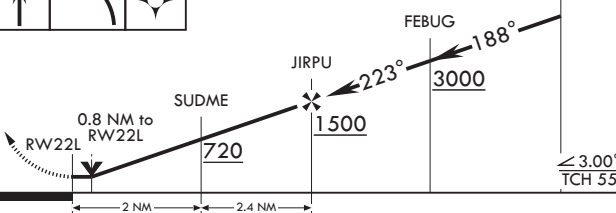


VGSI and descent angles not coincident.

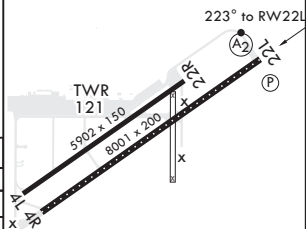
VORTAC

ELEV 35

TDZE 35



CATEGORY	A	B	C	D
RNAV MDA*	380-3/4	345	(400-3/4)	
C CIRCLING***	440-1 405 (500-1)	500-1 465 (500-1)	560-1 1/2 525 (600-1 1/2)	680-2 645 (700-2)
SANTA ANA ALTIMETER SETTING MINIMUMS				
RNAV MDA**	420-3/4	385 (400-3/4)	420-7/8	385 (400-7/8)
C CIRCLING***	480-1 445 (500-1)	540-1 505 (600-1)	600-1 1/2 565 (600-1 1/2)	720-2 685 (700-2)



HIRL Rwy 4R-22L
MIRL Rwy 4L-22R

REIL Rwy 22L

LOS ALAMITOS, CALIFORNIA

33°47'N - 118°03'W

LOS ALAMITOS AAF (KSLI)

Amdt 1 07DEC17

RNAV (GPS) RWY 22L

SW-3, 31 DEC 2020 to 28 JAN 2021

SW-3, 31 DEC 2020 to 28 JAN 2021