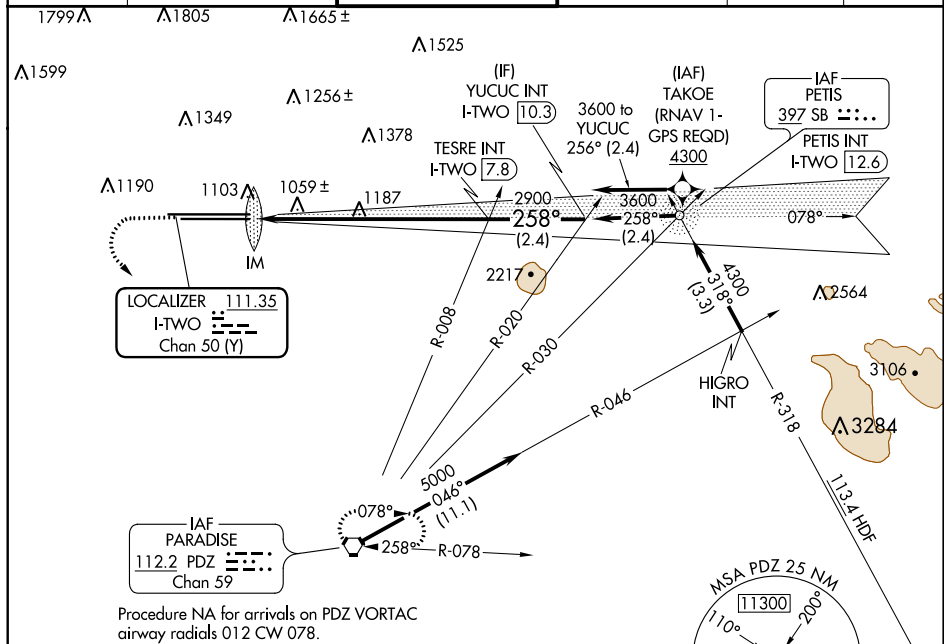


ILS RWY 26L (CAT II & III)
ONTARIO INTL (ONT)



2200 ↑ 4000 ↘ PDZ

VGS1 and ILS glidepath not coincident (VGS1 Angle 3.00/TCH 74).

YUCUC INT I-TWO 10.3

TESRE INT I-TWO 7.8

IM 1023

2900 258° 3600

2900

GS 3.00° TCH 58

1160' 6 NM 2.4 NM

CATEGORY	A	B	C	D
S-ILS 26L	CAT II RA 103/12 100 DA 1026			
S-ILS 26L	CAT III RVR 06			

CATEGORY II & III ILS - SPECIAL AIRCREW
& AIRCRAFT CERTIFICATION REQUIRED

SW-3, 31 DEC 2020 to 28 JAN 2021