

LOC/DME I-TWO <b>111.35</b> Chan <b>50 (Y)</b>	APP CRS <b>258°</b>	Rwy Idg TDZE Apt Elev	26L <b>10200</b> <b>926</b> <b>944</b>	26R <b>12197</b> <b>932</b> <b>944</b>
--	------------------------	-----------------------------	---	---

ILS or LOC RWY 26L  
ONTARIO INTL (ONT)

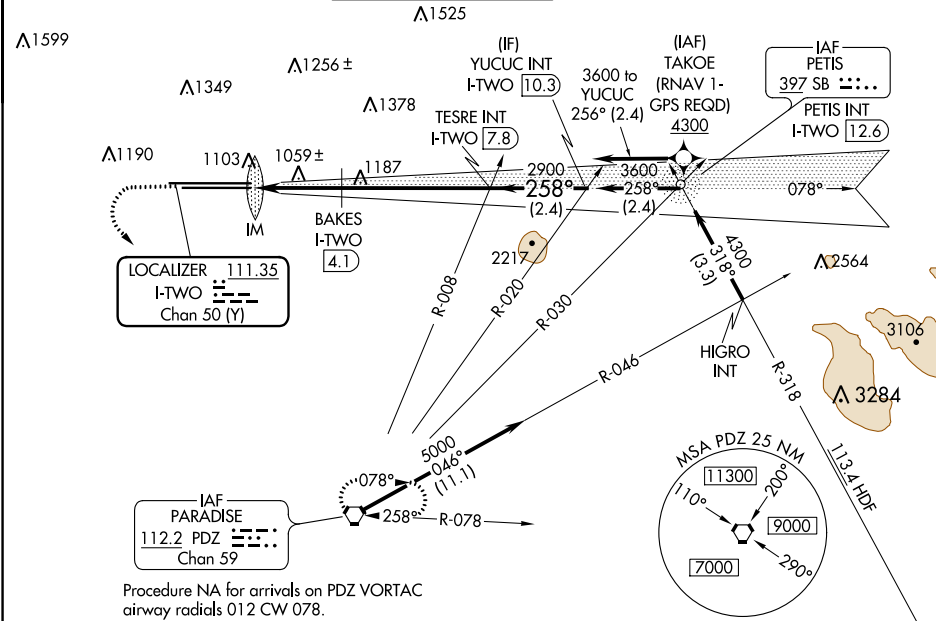
**⚠** Circling NA north of Rwy 8L-26R. Inop table does not apply to Sidestep 26R Cat A. For inop ALS, increase S-LOC Rwy 26L Cat C/D and Sidestep 26R Cat C visibility to 2½ SM, and Sidestep 26R Cat B visibility to 1¼ SM, and BAKES DME minimums S-LOC 26L Cat C/D to RVR 6000.

ALS-2 Rwy 26L

MALSR Rwy 26R

**MISSED APPROACH:** Climb to 2200 then climbing left turn to 4000 direct PDZ VORTAC and hold.

D-ATIS <b>124.25</b>	SOCAL APP CON <b>127.0 318.2</b>	ONTARIO TOWER <b>120.6 360.775</b>	GND CON <b>121.9 257.8</b>	CLNC DEL <b>118.1</b>	CPDLC
-------------------------	-------------------------------------	---------------------------------------	-------------------------------	--------------------------	-------



ELEV 944

D

TDZE 26L 926

TDZE 26R 932

2200

↑

↶

PDZ

VGSI and ILS glidepath not coincident

(VGSI Angle 3.00/TCH 74).

YUCUC INT

I-TWO 10.3

\*LOC only

TESRE INT

I-TWO 7.8

BAKES

I-TWO 4.1

I-TWO 1.8

I-TWO 2.9

IM

1720\*

2900

258°

3600

GS 3.00°

TCH 58

0.1

1 NM

1.2 NM

3.7 NM

2.4 NM

CATEGORY

A

B

C

D

S-ILS 26L

1126/18 200 (200-½)

S-LOC 26L

1720/24

794 (800-½)

1720/40

794 (800-¾)

1720-1¾

794 (800-1¾)

SIDESTEP 26R

1720/55

788 (800-1)

1720-1¾

788 (800-1¾)

1720-2

788 (800-2)

BAKES DME MINIMUMS

S-LOC 26L

1340/24

414 (400-½)

1340/40

414 (400-¾)

CIRCLING

1720-1

776 (800-1)

1720-1¼

776 (800-1¼)

1720-2½

776 (800-2½)

TWR 1024

12197 X 150

10200 X 150

TWR 1039

258° 6 NM from FAF

TDZ/CL Rwy 8L and 26L

HIRL Rwy 8L-26R and 8R-26L

FAF to MAP 6 NM

Knots

60

90

120

150

180

Min:Sec

6:00

4:00

3:00

2:24

2:00

SW-3, 31 DEC 2020 to 28 JAN 2021

SW-3, 31 DEC 2020 to 28 JAN 2021