

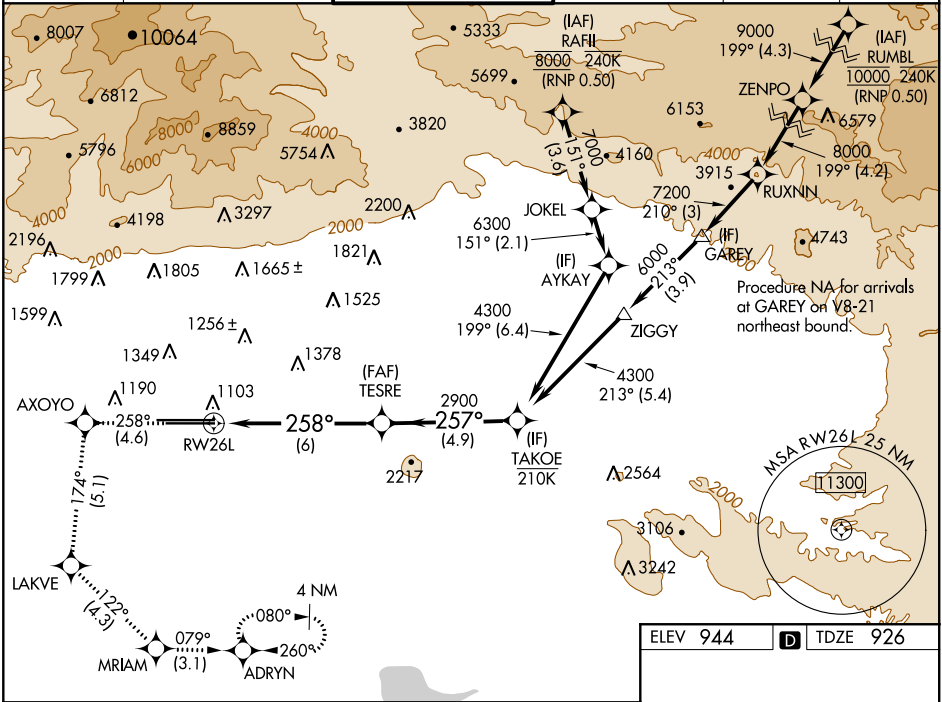
APP CRS	Rwy Idg	10200
258°	TDZE	926
	Apt Elev	944

RNAV (RNP) Z RWY 26L

ONTARIO INTL (ONT)

RNP AR APCH.	ALSF-2	MISSED APPROACH: Climb to 3400 on track 258° to AXOYO and track 174° to LAKVE and track 122° to MRIAM and track 079° to ADRYN and hold.
▼ For uncompensated Baro-VNAV systems, procedure NA below 1°C or above 54°C. For inop ALS, increase RNP 0.15 visibility all Cats to RVR 4500, RNP 0.18 visibility all Cats to RVR 5500, RNP 0.30 visibility all Cats to RVR 6000.		

D-ATIS	SOCAL APP CON	ONTARIO TOWER	GND CON	CLNC DEL	CPDLC
124.25	127.0 318.2	120.6 360.775	121.9 257.8	118.1	



3400	AXOYO	LAKVE	MRIAM	ADRYN	TAKOE
tr 258°	tr 174°	tr 122°	tr 079°		
VGSI and RNAV glidepath not coincident (VGSI Angle 3.00/TCH 74).					
See planview for multiple IF locations.					
GP 3.00° TCH 58					
CATEGORY	A	B	C	D	
RNP 0.15 DA		1218/24	292 (300-½)		
RNP 0.18 DA		1274/30	348 (400-¾)		
RNP 0.30 DA		1340/40	414 (400-¾)		
AUTHORIZATION REQUIRED					

ELEV 944	TDZE 926
TDZ/CL Rwy 8L and 26L	
HIRL Rwy 8L-26R and 8R-26L	