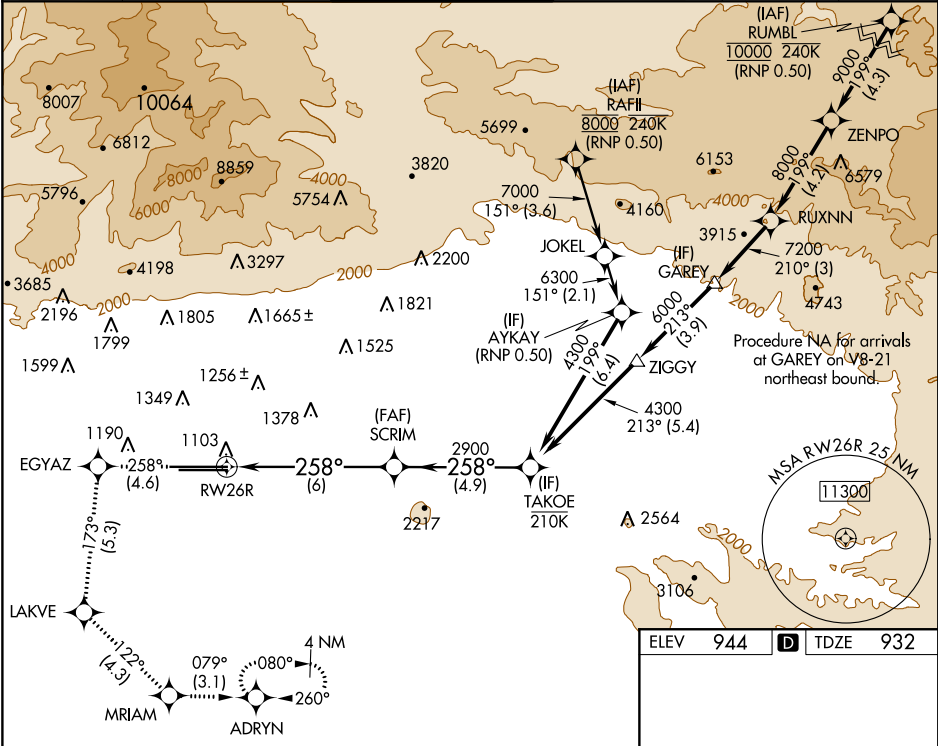
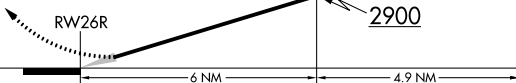


APP CRS	Rwy Idg	12197
258°	TDZE	932
	Apt Elev	944

RNAV (RNP) Z RWY 26R
ONTARIO INTL (ONT)

RNP AR APCH		MALSR	MISSED APPROACH: Climb to 3400 on track 258° to EGYAZ and track 173° to LAKVE and track 122° to MRIAM and track 079° to ADRYN and hold.		
▼ For uncompensated Baro-VNAV systems, procedure NA below 1°C or above 54°C. For inop ALS, increase RNP 0.30 visibility all Cats to RVR 6000.					
D-ATIS	SOCAL APP CON	ONTARIO TOWER	GND CON	CLNC DEL	CPDLC
124.25	127.0 318.2	120.6 360.775	121.9 257.8	118.1	



3400	EGYAZ	LAKVE	MRIAM	ADRYN	TAKOE			
↑ tr 258°	✦	tr 173°	✦	tr 122°		✦	tr 079°	✦
VGSI and RNAV glidepath not coincident (VGSI Angle 3.00/TCH 75).						SCRIM	4300	
See planview for multiple IF locations.						2900	258° 2900	
					GP 3.00° TCH 60			
CATEGORY	A		B		C	D		
RNP 0.12 DA			1265/26 333 (400-½)					
RNP 0.30 DA			1340/40 408 (400-¾)					
AUTHORIZATION REQUIRED								

