

APP CRS	Rwy Idg	10200
078°	TDZE	936
	Apt Elev	944

RNAV (RNP) Z RWY 8R

ONTARIO INTL (ONT)

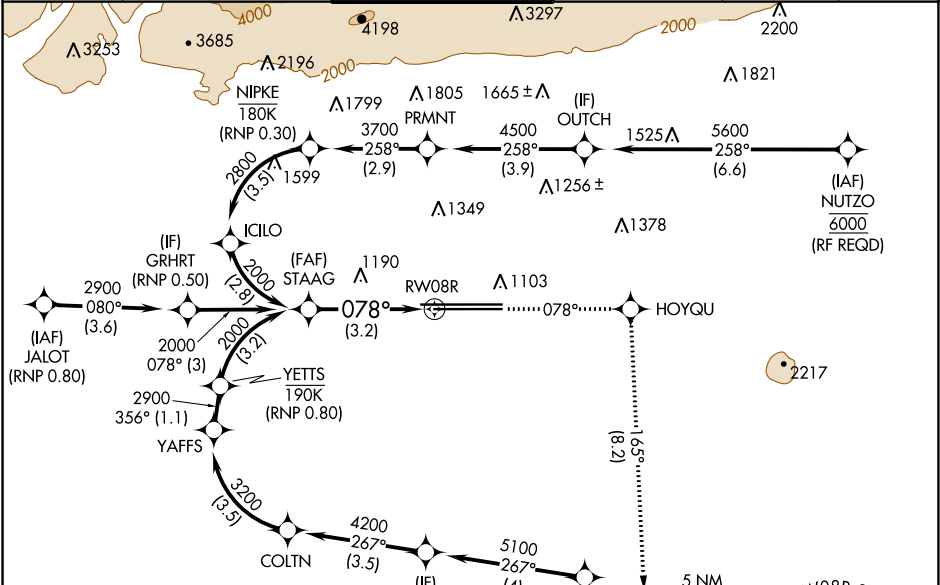
▽

NA

For uncompensated Baro-VNAV systems, procedure NA below 2°C (36°F) or above 54°C (130°F).

MISSED APPROACH: Climb to 5300 on track 078° to HOYQU and on track 165° to DLIUS and hold, continue climb-in-hold to 5300.

D-ATIS	SOCAL APP CON	ONTARIO TOWER	GND CON	CLNC DEL	CPDLC
124.25	127.0 318.2	120.6 360.775	121.9 257.8	118.1	



GPS REQUIRED

ELEV	944	TDZE	936
------	-----	------	-----

TDZ/CL Rwy 8L and 26L
HRL Rwy 8L-26R and 8R-26L

VGSI and RNAV glidepath not coincident (VGSI Angle 3.00/TCH 65).

5300

HOYQU

tr 165°

DLIUS

See planview for multiple IF locations.

CATEGORY	A	B	C	D
RNP 0.30 DA	1342-1½ 406 (400-1½)			

AUTHORIZATION REQUIRED