

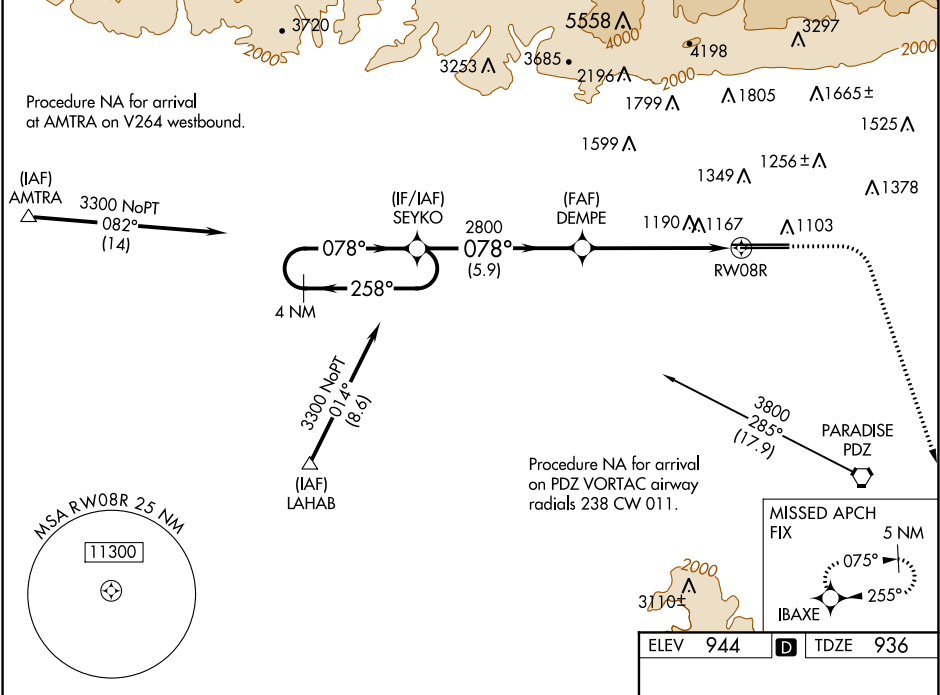
WAAS CH <b>70329</b> <b>W08A</b>	APP CRS <b>078°</b>	Rwy Idg <b>10200</b> TDZE <b>936</b> Apt Elev <b>944</b>
--	------------------------	--

RNAV (GPS) Y RWY 8R

ONTARIO INTL (ONT)

<div><div></div><div>For uncompensated Baro-VNAV systems, procedure NA below 2° C (36°F) or above 54°C (130°F). Circling NA north of Rwy 8L-26R. DME/DME RNP-0.3 NA.</div></div>	MISSED APPROACH: Climb to 1500 then climbing right turn to 5000 direct IBAXE and hold, continue climb-in-hold to 5000.
--	--

D-ATIS <b>124.25</b>	SOCAL APP CON <b>127.0 318.2</b>	ONTARIO TOWER <b>120.6 360.775</b>	GND CON <b>121.9 257.8</b>	CLNC DEL <b>118.1</b>	CPDLC
-------------------------	-------------------------------------	---------------------------------------	-------------------------------	--------------------------	-------



VGSI and RNAV glidepath not coincident (VGSI Angle 3.00/TCH 65)				
4 NM Holding Pattern		SEYKO	DEMPE	IBAXE
3300 ← 258°		→ 078°	→ 078°	* 1.4 NM to RW08R
GP 3.00°		2800		RW08R
TCH 53		5.9 NM	4.3 NM	1.4 NM
CATEGORY	A	B	C	D
LPV DA	1220/45 284 (300-7%)			
LNAV/VNAV DA	1494-1 558 (600-1%)			
LNAV MDA	1440/55	504 (500-1)	1440-1 504 (500-1%)	
CIRCLING	1440-1	496 (500-1)	1540-1 596 (600-1 1/2)	1600-2 656 (700-2)

