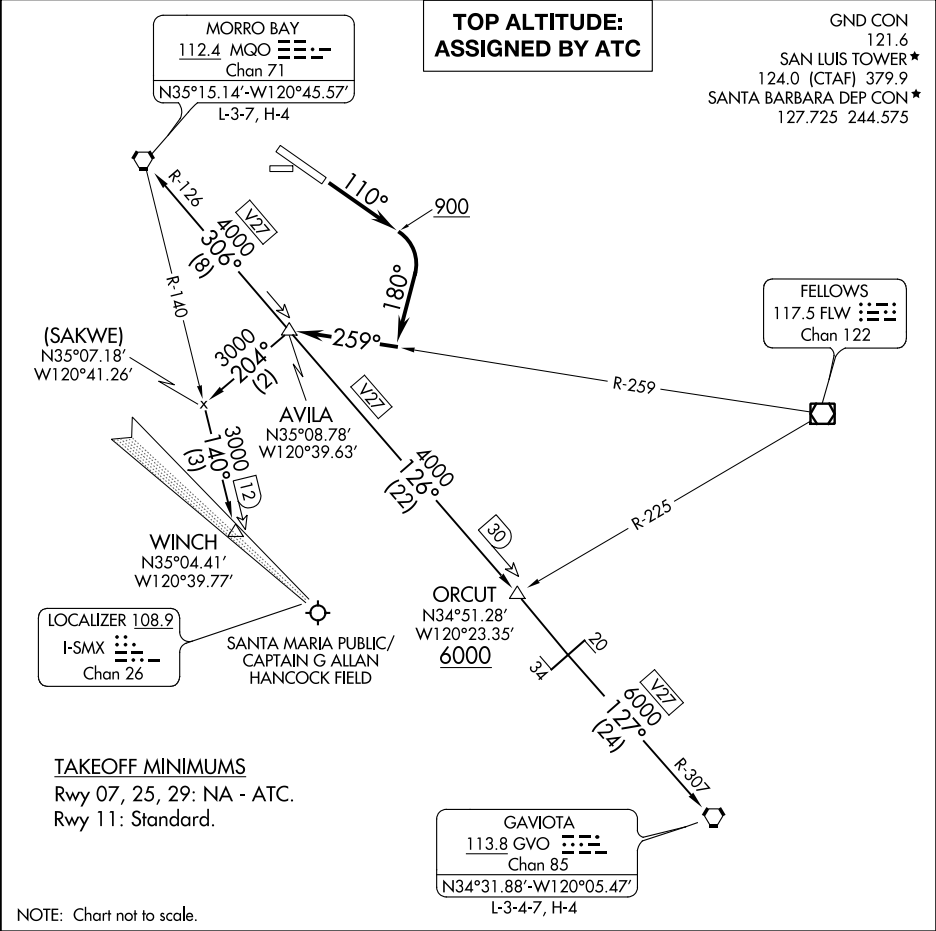


(AVILA4.AVILA) 20030

AVILA FOUR DEPARTURE

AL-989 (FAA)

SAN LUIS COUNTY RGNL (SBP)
SAN LUIS OBISPO, CALIFORNIA



SW-3, 31 DEC 2020 to 28 JAN 2021

SW-3, 31 DEC 2020 to 28 JAN 2021



DEPARTURE ROUTE DESCRIPTION

- TAKEOFF RUNWAY 11:** Climb on heading 110° to 900, then climbing right turn heading 180° to intercept the FLW VOR/DME R-259 to AVILA INT, then on assigned transition or assigned route. Maintain ATC assigned altitude.
- GAVIOTA TRANSITION (AVILA4.GVO):** From over AVILA on MQO R-126 to ORCUT , then on MQO R-126 and GVO R-307 to GVO VORTAC.
- MORRO BAY TRANSITION (AVILA4.MQO):** From over AVILA on MQO R-126 to MQO VORTAC.
- WINCH TRANSITION (AVILA4.WINCH):** From over AVILA on heading 204° to SAKWE, then on MQO R-140 to WINCH.

AVILA FOUR DEPARTURE

(AVILA4.AVILA) 30JAN20

SAN LUIS OBISPO, CALIFORNIA
SAN LUIS COUNTY RGNL (SBP)