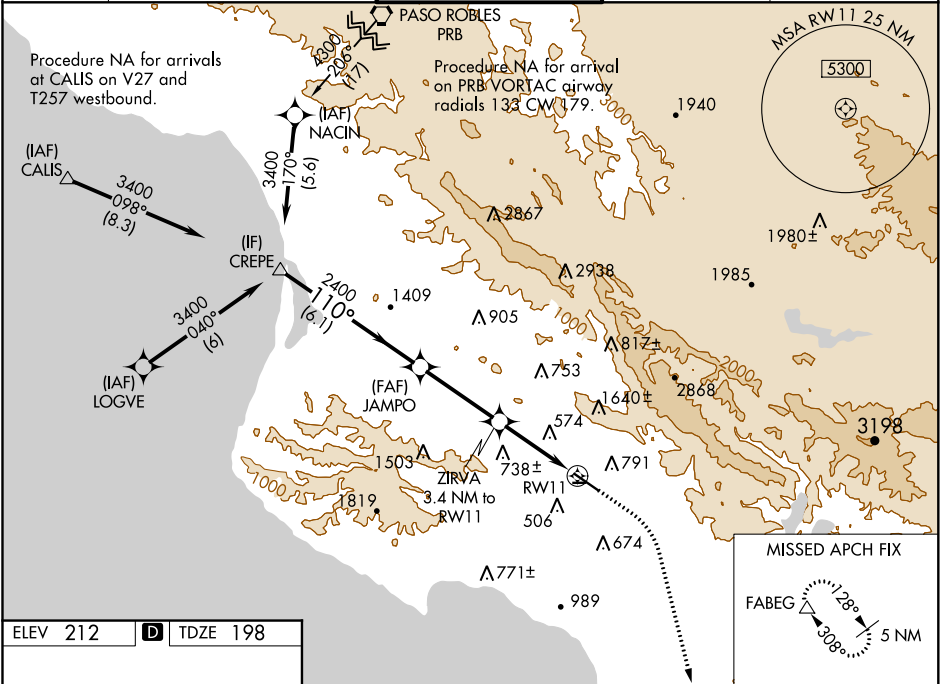


WAAS CH 50328 W11A	APP CRS 110°	Rwy Idg TDZE 198 Apt Elev 212
--	------------------------	---

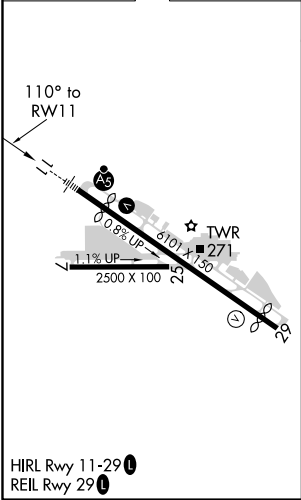
RNAV (GPS) RWY 11
SAN LUIS COUNTY RGNL (SBP)

RNP APCH.	MALSR	MISSED APPROACH: Climb to 1000 then climbing right turn to 4800 direct FABEG and hold, continue climb-in-hold to 4800.
<div><div></div><div></div></div> <div>Circling NA north of Rwy 11-29. Circling Rwy 25 NA at night. For uncompensated Baro-VNAV systems, LNAV/VNAV NA below 0°C or above 54°C. For inop ALS, increase LNAV/VNAV all Cats visibility to 2 SM.</div>	<div><div></div><div>A5</div></div>	

ATIS 120.6	SANTA BARBARA APP CON* 127.725 244.575	SAN LUIS TOWER* 124.0 (CTAF) 0 379.9	GND CON 121.6	UNICOM 122.95
----------------------	--	--	-------------------------	-------------------------



ELEV 212	D	TDZE 198
----------	----------	----------



		1000	4800	FABEG	
3400		JAMPO	ZIRVA		
GP 3.00° TCH 49°		2400	3.4 NM to RW11	*LNAV only	
110°			*1.9 NM to RW11		
2400					
6.1 NM		3.5 NM	1.5 NM	1.9 NM	
CATEGORY		A	B	C	D
LPV	DA	398-½		200 (200-½)	
LNAV/ VNAV	DA	946-¾		748 (800-¾)	
LNAV	MDA	840-½ 642 (700-½)		840-⅜ 642 (700-⅜)	
CIRCLING		840-1 628 (700-1)	1220-½ 1008 (1100-½)	1460-3 1248 (1300-3)	1560-3 1348 (1400-3)