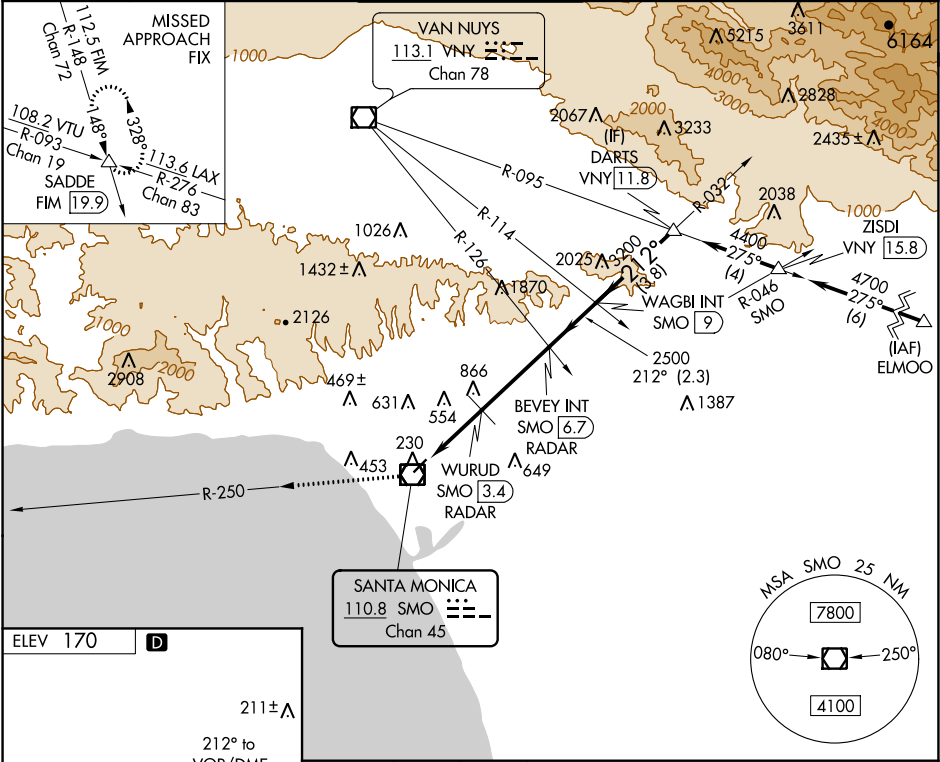


VOR/DME SMO	APP CRS	Rwy Idg	N/A
110.8	212°	TDZE	N/A
Chan 45		Apt Elev	170

VOR-A
SANTA MONICA MUNI (SMO)

NA	Procedure NA for arrivals at ELMOO on V186 southeast bound. Circling NA northwest of Rwy 3-21.	MISSED APPROACH: Climb to 5000 on SMO VOR/DME R-250 and on FIM VORTAC R-148 to SADDE INT/19.9 DME and hold, continue climb-in-hold to 5000.
----	--	---

ATIS 119.15	SOCAL APP CON 128.5 235.975	SANTA MONICA TOWER ★ 120.1 (CTAF) 257.8	GND CON 121.9	UNICOM 122.95
-----------------------	---------------------------------------	---	-------------------------	-------------------------



MIRL Rwy 3-21 REIL Rwy 21	SMO R-250			
	FIM R-148	SADDE	BEVEY INT SMO 6.7 RADAR	WAGBI INT SMO 9
WURUD SMO 3.4 RADAR				
SMO VOR/DME				
3.4 NM 3.2 NM 2.3 NM 3.8 NM				
CATEGORY	A	B	C	D
CIRCLING	1540-1¼ 1370 (1400-1¼)	1540-1½ 1370 (1400-1½)	1540-3	1370 (1400-3)
WURUD FIX MINIMUMS				
CIRCLING	860-1	690 (700-1)	1180-3	1010 (1100-3)