

WAAS
CH **93702**
W06A

APP CRS
057°

Rwy Idg
TDZE **2351**
Apt Elev **2351**

RNAV (GPS) RWY 6

GENERAL WM J FOX AIRFIELD (WJT')

▼

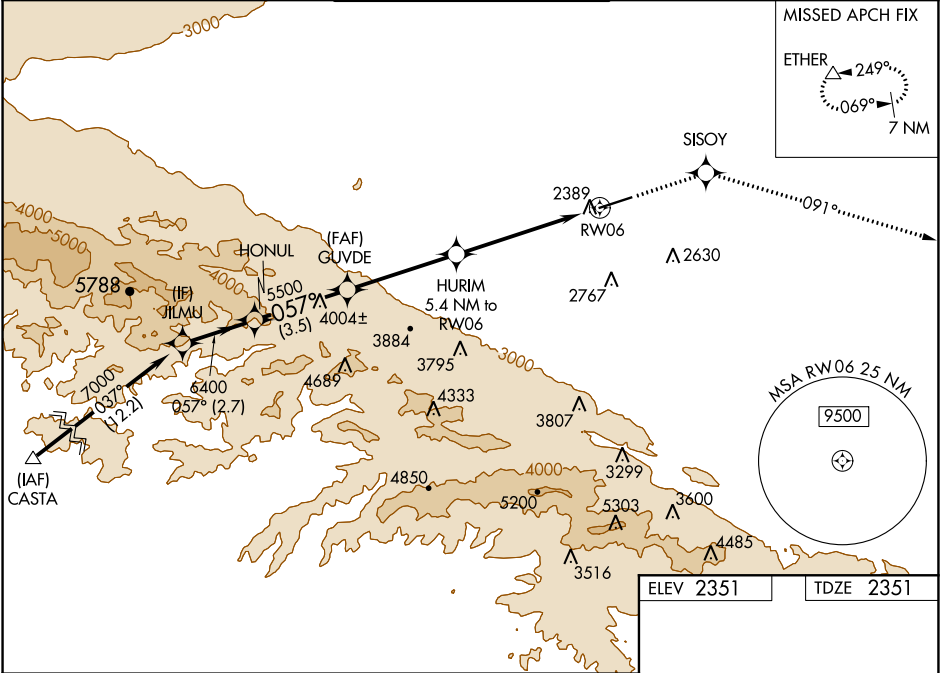
▲

▼▼

When VGSi inop, Straight-in/Circling Rwy 6 procedure NA at night.
DME/DME RNP-0.3 NA. Visibility reduction by helicopters NA.
For uncompensated Baro-VNAV systems, LNAV/VNAV NA below -19°C (-2°F) or above 45°C (113°F).
If local altimeter setting not received, use Palmdale altimeter setting and increase all DA/MDAs 60 feet.
Baro-VNAV NA when using Palmdale altimeter setting.

MISSED APPROACH: Climb to 6000 direct SISOY and via 091° track to ETHER and hold.

ATIS 126.3	JOSHUA APP CON 126.1 290.3	FOX TOWER* 118.525 (CTAF) 256.9	GND CON 121.7 256.9	UNICOM 122.95
----------------------	--------------------------------------	---	-------------------------------	-------------------------



JILMU
7000
Procedure Turn NA
GP 3.00°
TCH 40

HONUL
6400

GUVDE
5500

HURIM
5.4 NM to RW06

SISOY
6000

tr 091°

ETHER
△

*LNAV only.

RW06

7201 X 150
2421

057° to RW06

CATEGORY	A	B	C	D
LPV DA	2601-1 250 (300-1)			
LNAV/VNAV DA	2649-1 298 (300-1)			
LNAV MDA	2940-1 589 (600-1)	2940-1½ 589 (600-1½)	2940-1¾ 589 (600-1¾)	
CIRCLING	2940-1 589 (600-1)	2940-1½ 589 (600-1½)	2940-2 589 (600-2)	

REIL Rwy 6 and 24
MIRL Rwy 6-24