

TACAN NUC Chan <b>123</b>	APCH CRS <b>236°</b>	Rwy Idg <b>9301</b> TDZE <b>184</b> Arpt Elev <b>184</b>
------------------------------	-------------------------	--

SAN CLEMENTE ISLAND NALF

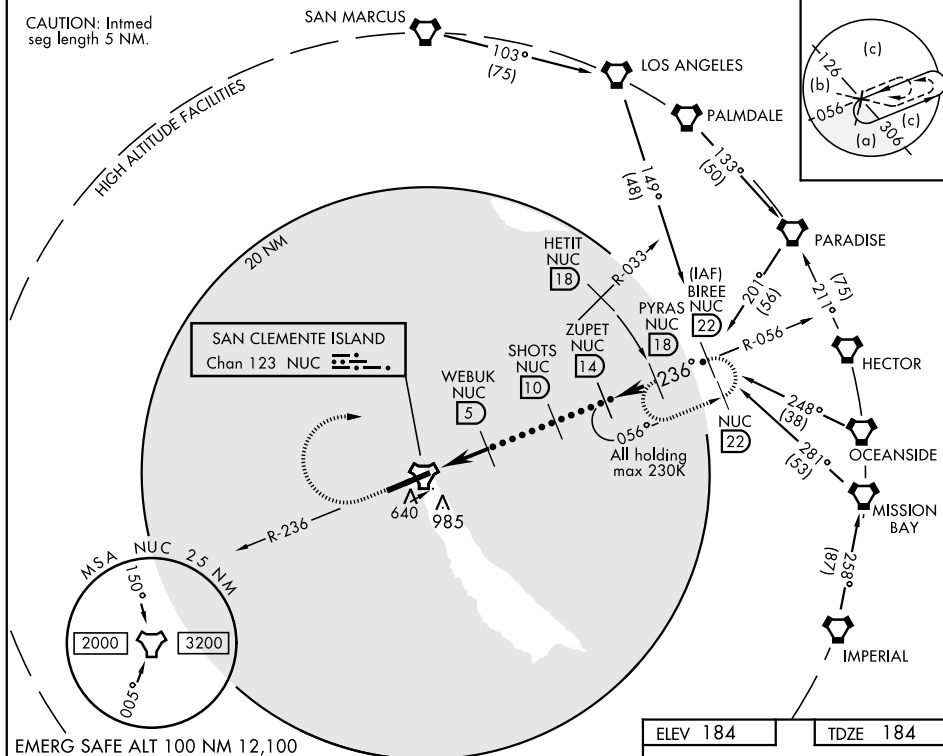
(FREDERICK SHERMAN FLD) (KNUC)

**T** \*Circling not authorized S of Rwy 6-24.

**MISSED APPROACH:** Climb to 1500 via NUC TACAN R-236 then climbing right turn to 4000 via NUC R-033 to HETIT. Then arc NE of the NUC TACAN via the 18 DME arc to PYRAS and hold.

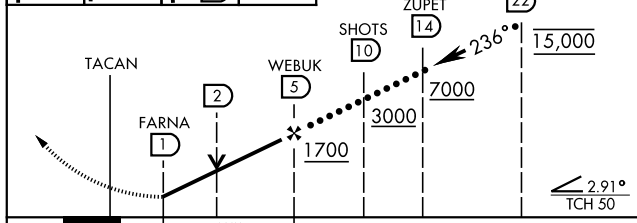
ATIS ★ 268.6	SAN CLEMENTE APP CON 127.05 292.15	SAN CLEMENTE ISLAND TOWER ★ 126.75 278.8	GND CON 0 119.55 251.05	ASR/PAR
-----------------	---------------------------------------	---	----------------------------	---------


CAUTION: Intmed  
seq length 5 NM.

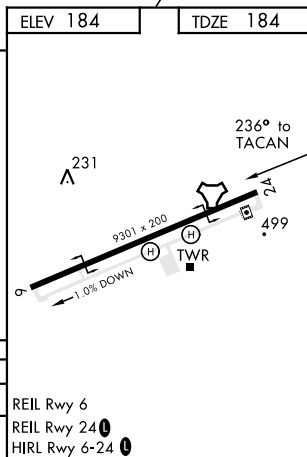


EMERG SAFE ALT 100 NM 12,100

1500 ↑ NUC R-236	4000 ↘ NUC R-033	HETIT ↘ Arc 18	PYRAS R-056 18
---------------------------	---------------------------	-------------------------	----------------------



				
CATEGORY	C		D	E
S-24	780-1 $\frac{3}{4}$ 596 (600-1 $\frac{3}{4}$ )			
CIRCLING *	780-1 $\frac{3}{4}$ 596 (600-1 $\frac{3}{4}$ )		780-2 596 (600-2)	



SAN CLEMENTE ISLAND, CALIFORNIA

Amdt 3 25APR19

33°01'N-118°35'W

SAN CLEMENTE ISLAND NALF (KNUC)  
(FREDERICK SHERMAN FLD)

HI-TACAN RWY 24

SW-3, 31 DEC 2020 to 28 JAN 2021