

SAN CLEMENTE, CALIFORNIA

RNAV (GPS) RWY 24

AL-5126 (USN)

SAN CLEMENTE ISLAND NALF (FREDERICK SHERMAN FLD) (KNUC)

APCH CRS 235°	Rwy Idg 9301 TDZE 184 Arpt Elev 184
------------------	--

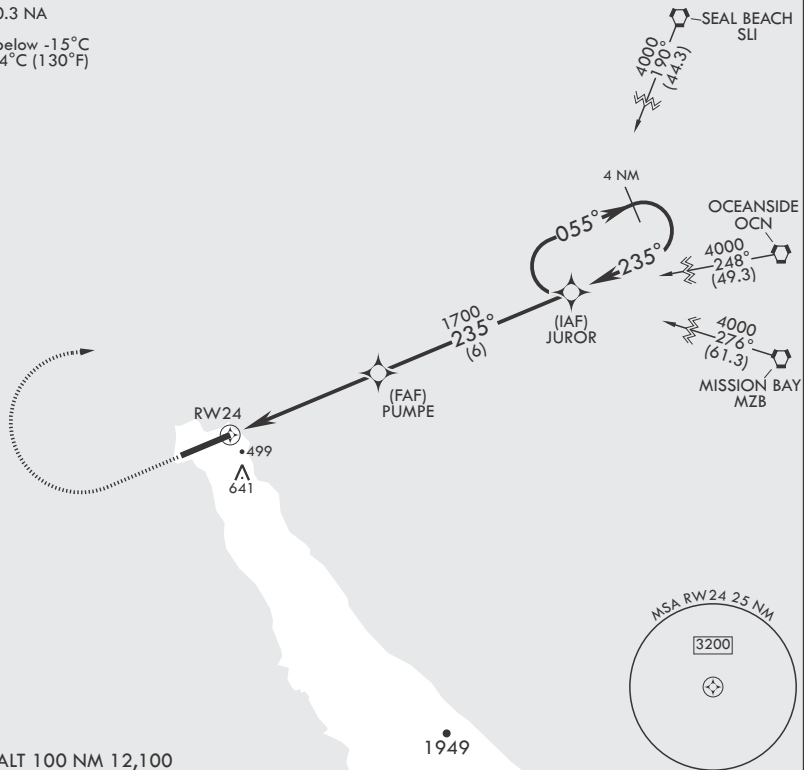
T * Circling not authorized S of Rwy 6-24.

MISSED APPROACH: Climb to 1500, then climbing right turn to 3000 direct JUROR and hold.

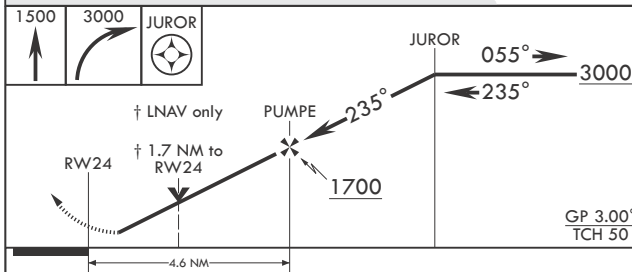
ATIS ★ 268.6	SAN CLEMENTE APP CON 127.05 292.15	TOWER ★ 126.75 278.8	GND CON 119.55 0 251.05	ASR/PAR
-----------------	---------------------------------------	-------------------------	----------------------------	---------

DME/DME RNP-0.3 NA

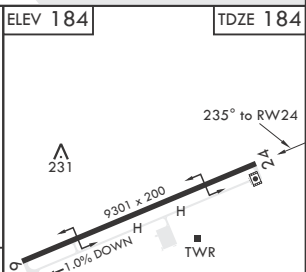
Baro-VNAV NA below -15°C (5°F) or above 54°C (130°F)



EMERG SAFE ALT 100 NM 12,100



CATEGORY	A	B	C	D
RNAV/VNAV DA	631-1 ^{3/8} 447 (500-1 ^{3/8})	642-1 ^{3/8} 458 (500-1 ^{3/8})	650-1 ^{3/8} 466 (500-1 ^{3/8})	661-1 ^{3/8} 477 (500-1 ^{3/8})
RNAV MDA	760-1	576 (600-1)	760-1 ^{5/8}	576 (600-1 ^{5/8})
CIRCLING*	780-1	596 (600-1)	780-1 ^{5/8} 596 (600-1 ^{5/8})	780-2 596 (600-2)



SAN CLEMENTE, CALIFORNIA

Amdt 3 25APR19

SAN CLEMENTE ISLAND NALF (FREDERICK SHERMAN FLD) (KNUC)

33°01'N - 118°35'W

RNAV (GPS) RWY 24

SW-3, 31 DEC 2020 to 28 JAN 2021

SW-3, 31 DEC 2020 to 28 JAN 2021