

SAN CLEMENTE ISLAND, CALIFORNIA

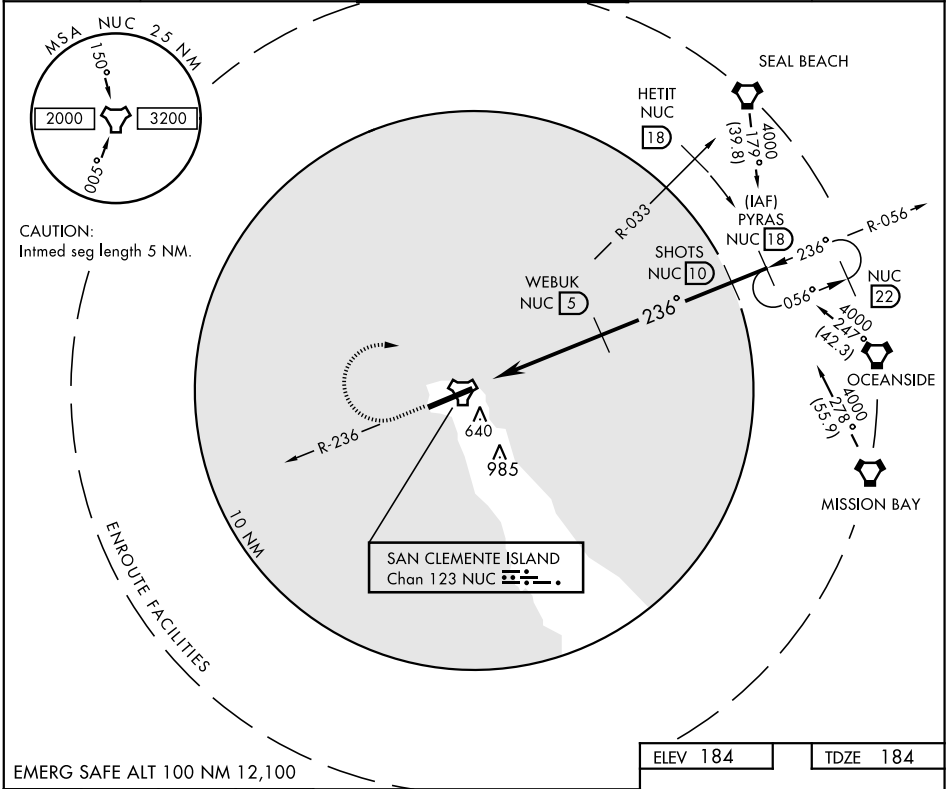
TACAN NUC Chan 123	APCH CRS 236°	Rwy Idg TDZE Arprt Elev	9301 184 184
------------------------------	-------------------------	-------------------------------	---

AL-5126 [USN]

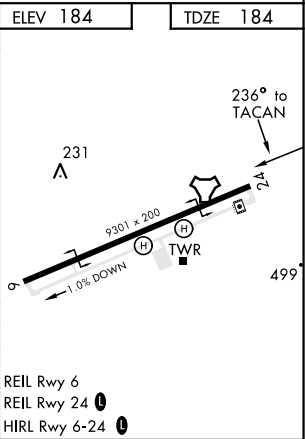
TACAN RWY 24
SAN CLEMENTE ISLAND NALF
(FREDERICK SHERMAN FLD) (KNUC)

▼ * Circling not authorized S of Rwy 6-24.	MISSED APPROACH: Climb to 1500 via NUC TACAN R-236 then climbing right turn to 4000 via NUC R-033 to HETIT. Then arc NE of NUC TACAN via the 18 DME arc to PYRAS and hold.
---	--

ATIS ★ 268.6	SAN CLEMENTE APP CON 127.05 292.15	SAN CLEMENTE ISLAND TOWER ★ 126.75 278.8	GND CON 0 119.55 251.05	ASR/PAR
------------------------	--	--	-----------------------------------	---------



1500 ↑ NUC R-236	4000 ↑ NUC R-033	HETIT Arc 18	PYRAS R-056 18	SHOTS 10	PYRAS R-056 18
TACAN FARNA WEBUK SHOTS PYRAS 4000 3000 1700 236° 2.91° TCH 50					
CATEGORY	A	B	C	D	
S-24	780-1	596 (600-1)	780-134	596 (600-134)	
CIRCLING *	780-1	596 (600-1)	780-134 596 (600-134)	780-2 596 (600-2)	



SAN CLEMENTE ISLAND, CALIFORNIA
Amdt 3 25APR19

33°01'N-118°35'W

SAN CLEMENTE ISLAND NALF (KNUC)
(FREDERICK SHERMAN FLD)

TACAN RWY 24

SW-3, 31 DEC 2020 to 28 JAN 2021

SW-3, 31 DEC 2020 to 28 JAN 2021