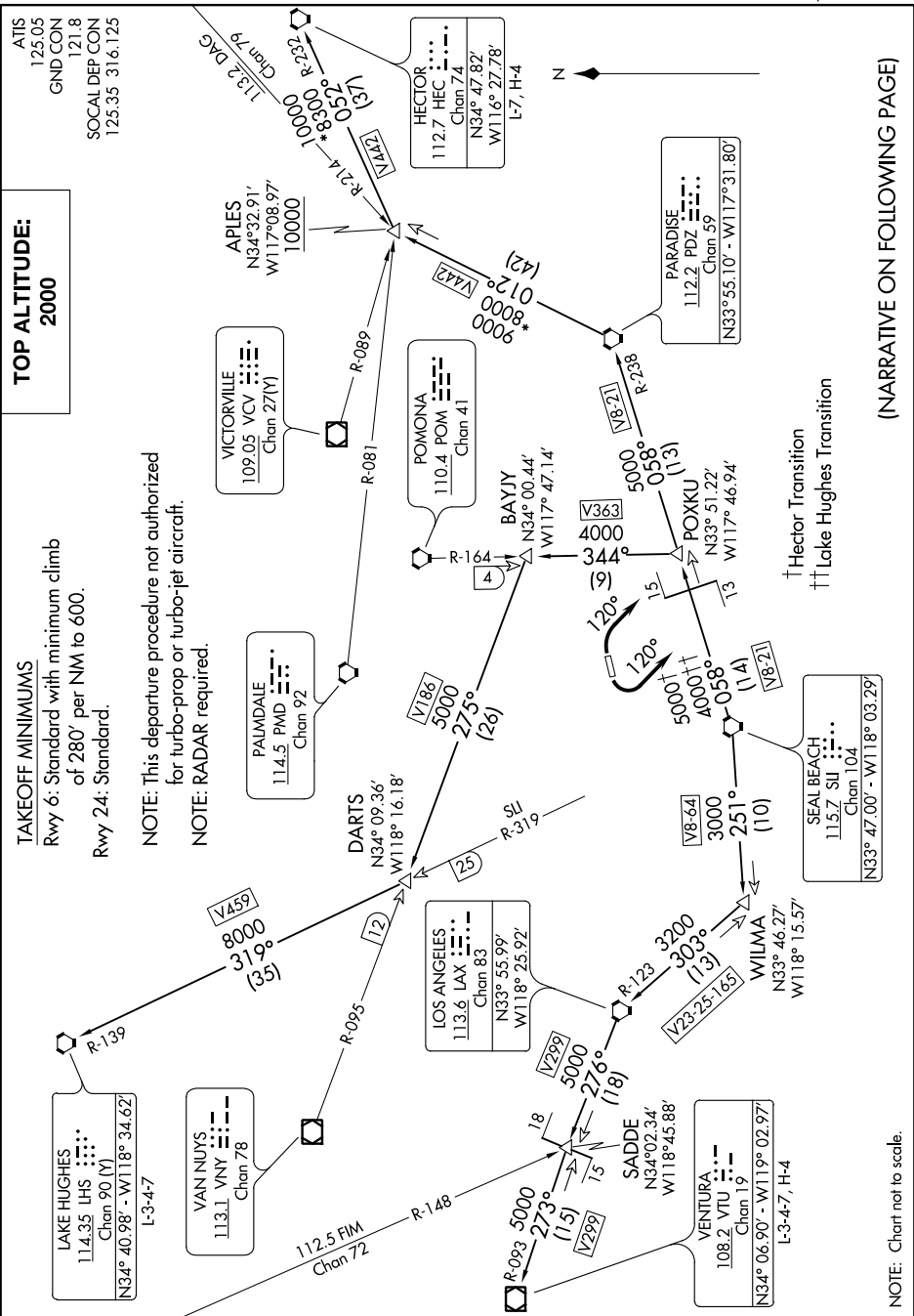


ANAHEIM ONE DEPARTURE

AL-5136 (FAA)

FULLERTON MUNI (F'UL)
FULLERTON, CALIFORNIA

SW-3, 31 DEC 2020 to 28 JAN 2021



TOP ALTITUDE:
2000

TAKEOFF MINIMUMS

Rwy 6: Standard with minimum climb
of 280' per NM to 600.
Rwy 24: Standard.

NOTE: This departure procedure not authorized
for turbo-prop or turbo-jet aircraft.
NOTE: RADAR required.

(NARRATIVE ON FOLLOWING PAGE)

ANAHEIM ONE DEPARTURE

FULLERTON, CALIFORNIA
FULLERTON MUNI (F'UL)

SW-3, 31 DEC 2020 to 28 JAN 2021

NOTE: Chart not to scale.