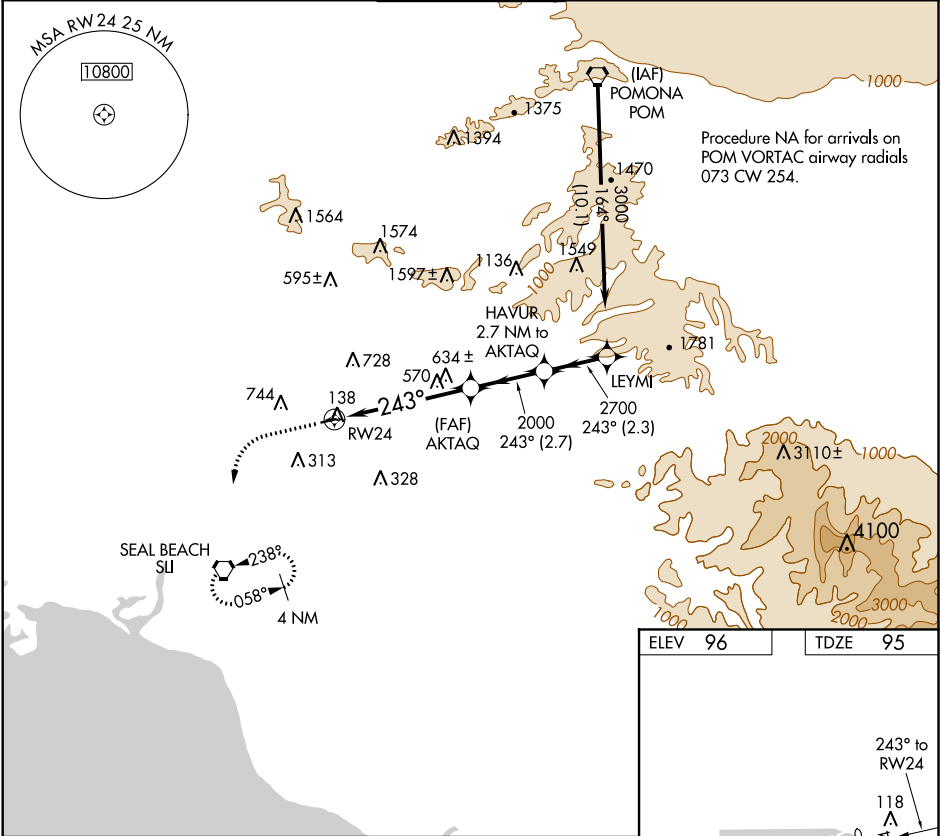


APP CRS	Rwy Idg	2868
243°	TDZE	95
	Apt Elev	96

RNAV (GPS) RWY 24
FULLERTON MUNI (F'UL)

RNP APCH.	MISSED APPROACH: Climb to 1300, then climbing left turn to 2600 direct SUI VORTAC and hold.
Inoperative table does not apply. Helicopter visibility reduction below 1 SM NA.	

ATIS 125.05	SOCAL APP CON 125.35 316.125	FULLERTON TOWER ★ 119.1 (CTAF) 0	GND CON 121.8	UNICOM 122.95
----------------	---------------------------------	-------------------------------------	------------------	------------------



1300	2600	SUI
VGSIs and descent angles not coincident (VGSIs Angle 4.00/TCH 33).		
RWY 24		
AKTAQ		
HAVUR 2.7 NM to AKTAQ		
LEYMI		
3000		
243°		
2700		
Procedure Turn NA		
5 NM		
2.7 NM		
2.3 NM		
CATEGORY	A	B
LNAV MDA	900-1 805 (900-1)	900-1 1/4 805 (900-1 1/4)
CATEGORY	C	D
LNAV MDA	NA	NA

SW-3, 31 DEC 2020 to 28 JAN 2021

SW-3, 31 DEC 2020 to 28 JAN 2021