

ILS Y or LOC/DME RWY 30

LOC I-NSI	APCH CRS	Rwy Idg
109.7	301°	10,002
		TDZE 506
		Arpt Elev 506

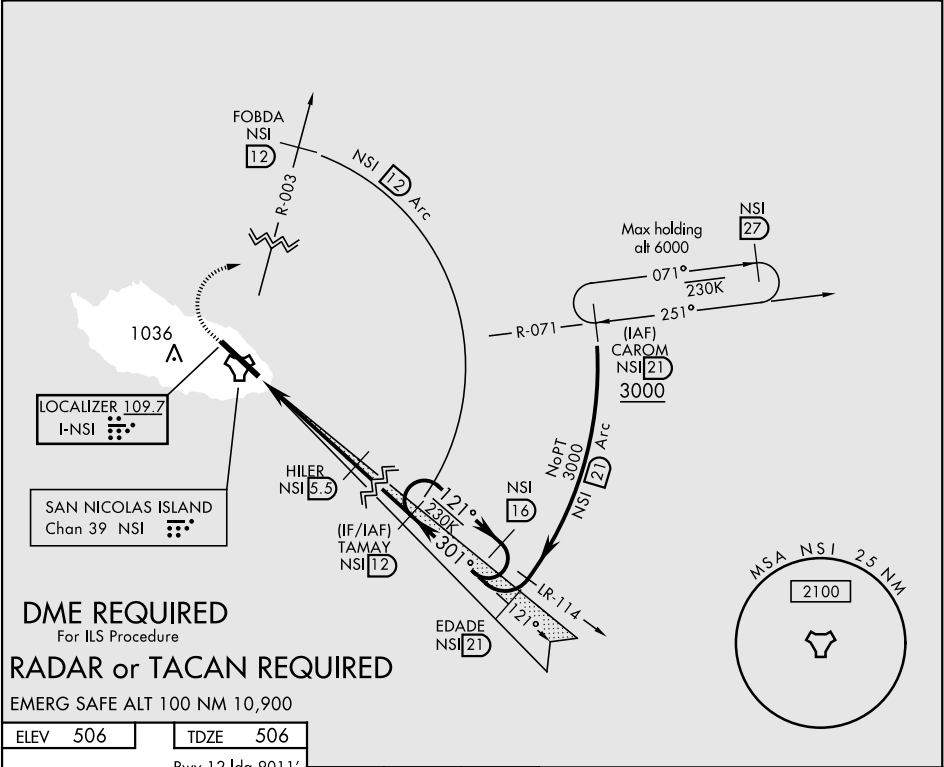
AL-5162 [USN]

SAN NICOLAS ISLAND NOLF (KNSI)

*Circling not authorized W of Rwy 12-30.

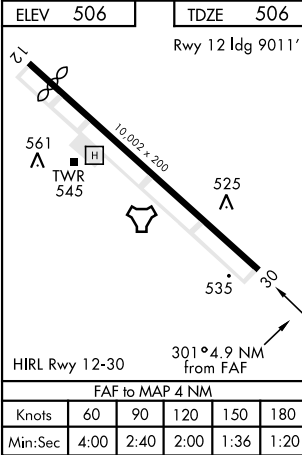
MISSED APPROACH: Climb to 1000 via heading 301°, then climbing right turn to 3000 to intercept NSI TACAN R-003 to FOBDA, then arc E of NSI 12 mile arc to TAMAY and hold.

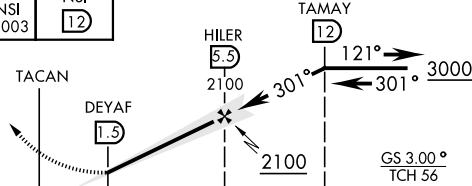
SAN NICOLAS TOWER ★
126.85 379.3



DME REQUIRED
For ILS Procedure
RADAR or TACAN REQUIRED

EMERG SAFE ALT 100 NM 10,900



1000	3000	FOBDA NSI 12			
↑ hdg 301°	↷ NSI R-003				
					
CATEGORY	A	B	C	D	E
S-ILS 30	706-¾		200	(200-¾)	
S-LOC 30	780-1		274	(300-1)	
CIRCLING *	860-1 354 (400-1)	960-1 454 (500-1)	960-1½ 454 (500-1½)	1060-2	554 (600-2)

ILS Y or LOC/DME RWY 30

SW-3, 31 DEC 2020 to 28 JAN 2021

SW-3, 31 DEC 2020 to 28 JAN 2021