

LOC I-NSI 109.7	APCH CRS 301°	Rwy Idg TDZE Arpt Elev 10,002 506 506
---------------------------	-------------------------	---

AL-5162 [USN]

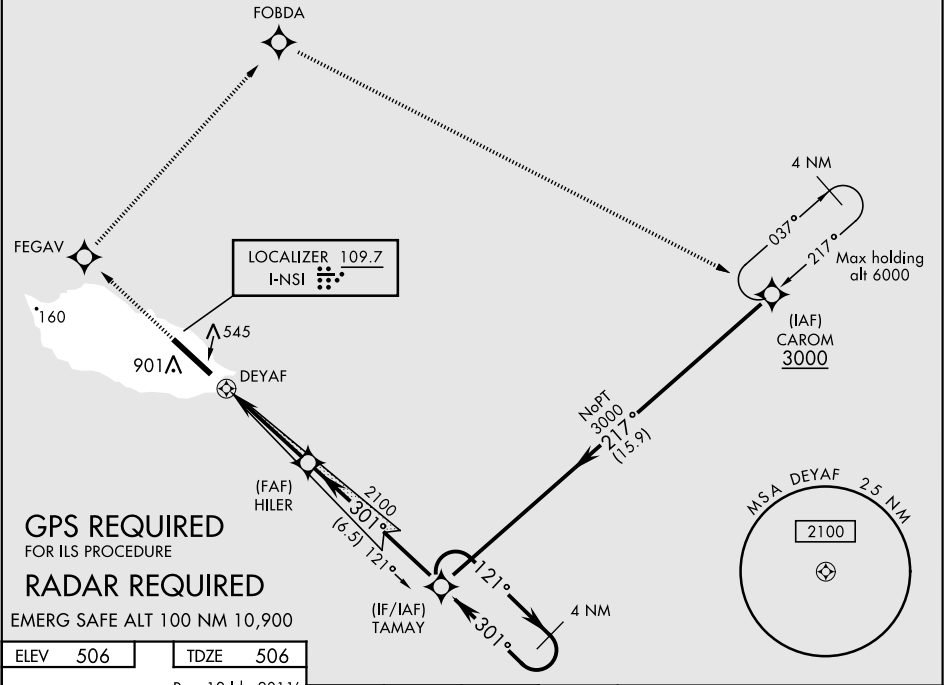
SAN NICOLAS ISLAND NOLF (KNSI)

ILS Z or RNAV (GPS) RWY 30

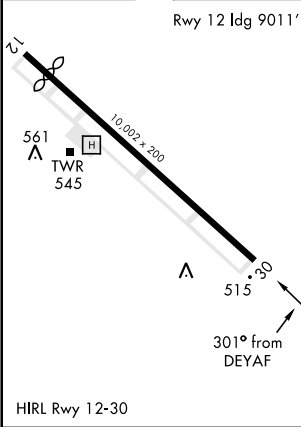
✈ * Circling not authorized W of Rwy 12-30.	↑ MISSED APPROACH: Climb to 3000 direct FEGAV, track 030° to FOBDA, track 105° to CAROM and hold.
--	--

SAN NICOLAS TOWER ★
126.85 379.3

† All acft are restricted to 250 KIAS or less until FEGAV during the missed approach procedure.



ELEV 506	TDZE 506
----------	----------



3000

FEGAV

tr 030°

FOBDA

TAMAY

HILER

DEYAF

121°

301°

3000

GS 3.00°

TCH 56

2100

0.9

4 NM

CATEGORY	A	B	C	D	E
S-ILS 30	706-¾		200	(200-¾)	
LNAV MDA	920-1 414 (500-1)		920-1½	414	(500-1 ½)
CIRCLING *	920-1 414 (500-1)	960-1 454 (500-1)	960-1½ 454 (500-1½)	1060-2	554 (600-2)

ILS Z or RNAV (GPS) RWY 30

SW-3, 31 DEC 2020 to 28 JAN 2021

SW-3, 31 DEC 2020 to 28 JAN 2021