

TACAN RWY 30

TACAN NSI Chan 39	APCH CRS 292°	Rwy Idg 10,002 TDZE 506 Arpt Elev 506
-----------------------------	-------------------------	--

AL-5162 [USN]

SAN NICOLAS ISLAND NOLF (KNSI)



*Circling not authorized W of Rwy 12-30.

† MISSED APPROACH: Climbing right turn to 3000, intcp the NSI TACAN R-003 to FOBDA and hold.

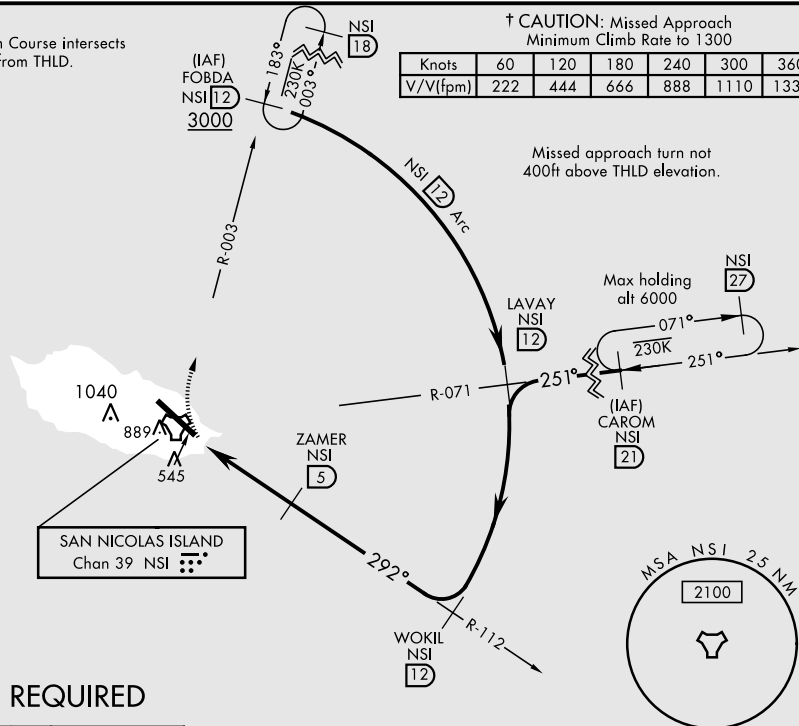
SAN NICOLAS TOWER ★
126.85 379.3

CAUTION:
Final Approach Course intersects
RCL at 4721 ft from THLD.

† CAUTION: Missed Approach
Minimum Climb Rate to 1300

Knots	60	120	180	240	300	360
V/V(fpm)	222	444	666	888	1110	1332

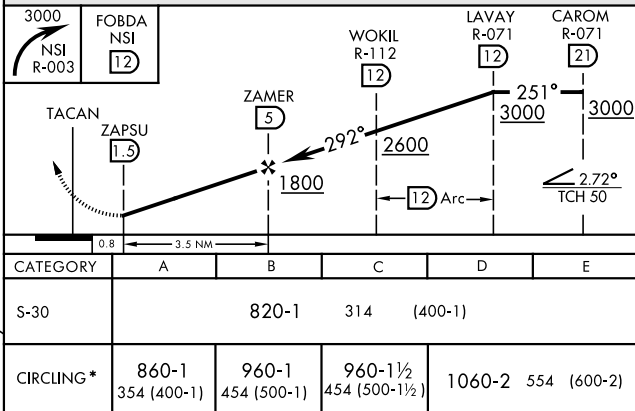
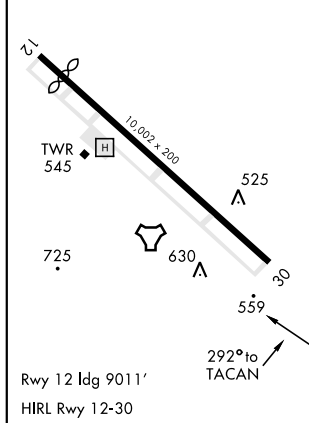
Missed approach turn not
400ft above THLD elevation.



RADAR REQUIRED

ELEV	506		TDZE	506
------	-----	--	------	-----

EMERG SAFE ALT 100 NM 10,900



SAN NICOLAS ISLAND, CALIFORNIA

33°14'N-119°27'W

SAN NICOLAS ISLAND NOLF (KNSI)

Amdt 4 03JAN19

TACAN RWY 30

SW-3, 31 DEC 2020 to 28 JAN 2021