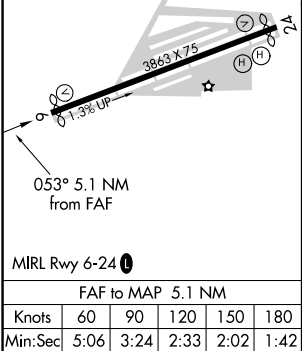
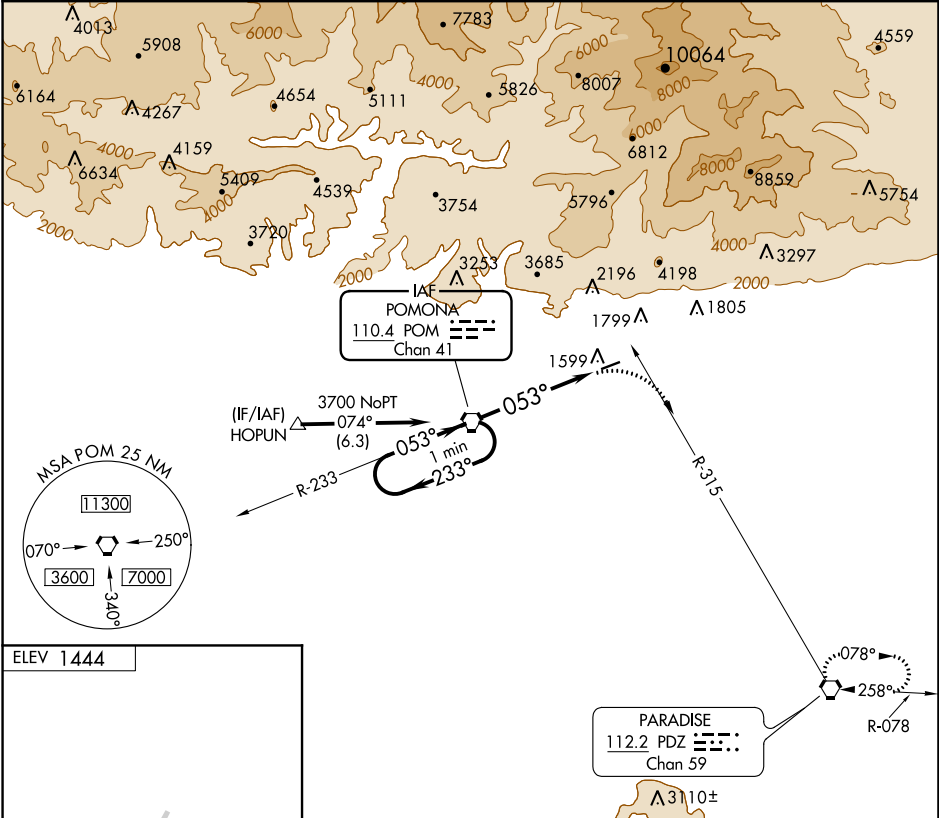


VORTAC POM	APP CRS	Rwy Idg	N/A
110.4	053°	TDZE	N/A
Chan 41		Apt Elev	1444

VOR-A
CABLE (CCB)

NA Circling NA northwest of Rwy 6-24. Procedure NA at night. When local altimeter setting not received, use Ontario altimeter setting and increase all MDA 100 feet and all visibilities ½ SM. Rwy 24 helicopter visibility reduction below 1 SM NA.	MISSED APPROACH: Climbing right turn to 4000 via heading 105° and PDZ R-315 to PDZ VORTAC and hold.
--	---

AWOS-3P 119.525	SOCAL APP CON 125.5 349.0	UNICOM 123.0 (CTAF) 0
---------------------------	-------------------------------------	---------------------------------



VGSI and descent angles not coincident (VGSI Angle 4.00/ TCH 34).			
One Minute Holding Pattern	POM VORTAC	4000 hdg 105°	PDZ R-315
3700 ← 233° 053° →			
4.22° TCH 40			
5.1 NM			
POM 5.1			
5.1 NM			
CATEGORY			
A	B	C	D
CIRCLING			
2240-1	796 (800-1)	2240-2¼ 796 (800-2¼)	NA